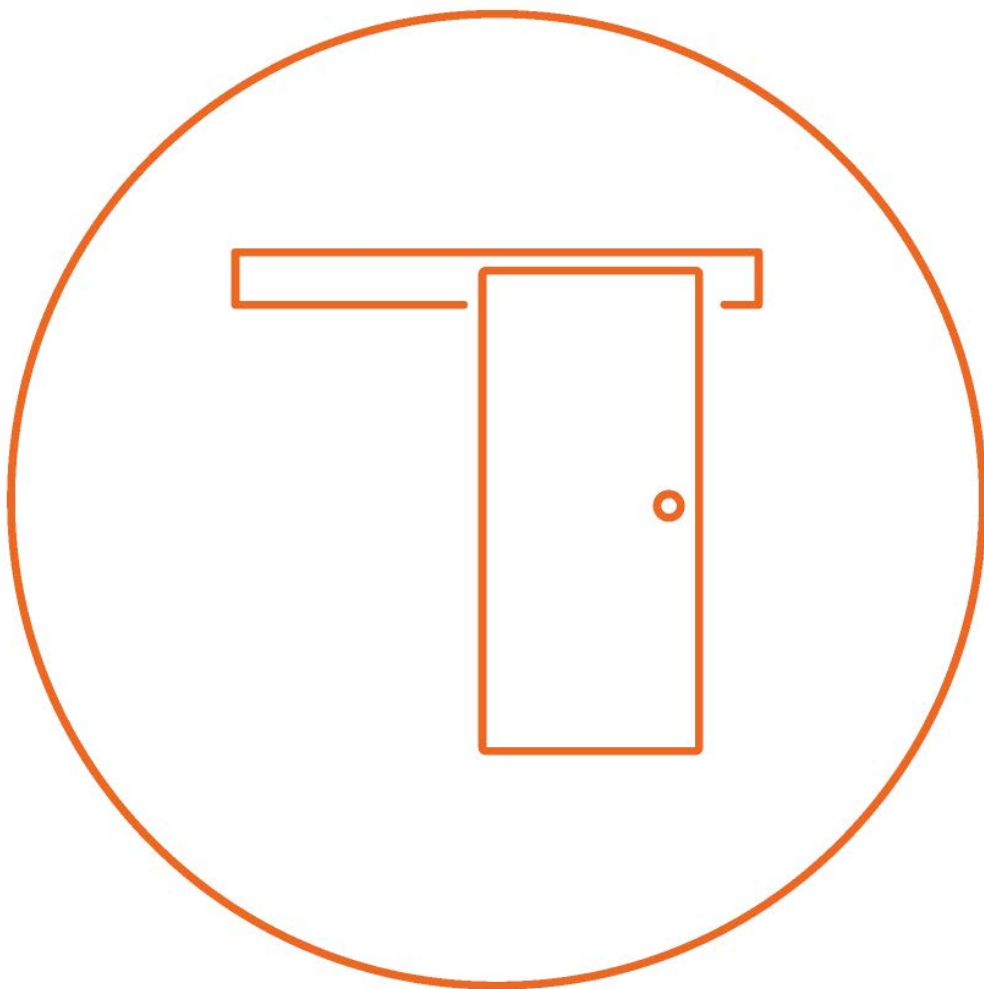


System EASY

Sliding door – Wood



Assembly notice

Instructions for assembling
our products correctly

04/2015

CONTENTS

Profiles and Accessories2

Door connections4

SINGLE DOOR - WOOD

Assembling the framework and Easy Rail 5

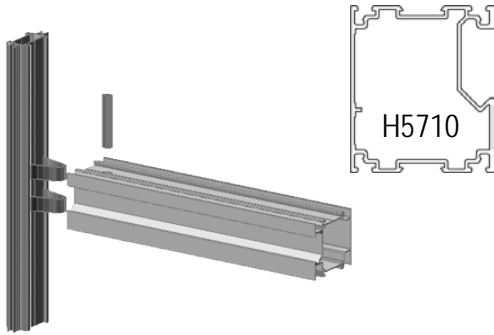
Fitting the door6 to 9

DOUBLE DOOR - WOOD

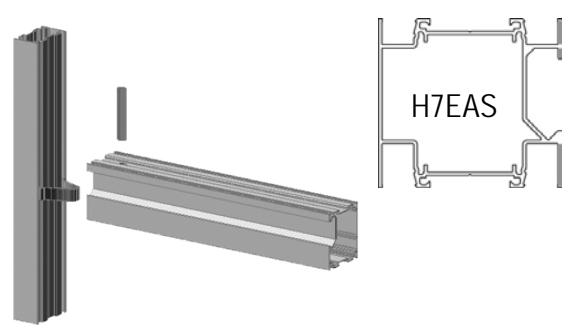
Assembling the framework and Easy Rail10

Fitting the door11 to 14

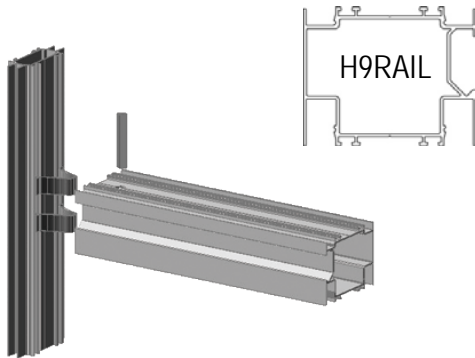
H5710
Rail H5



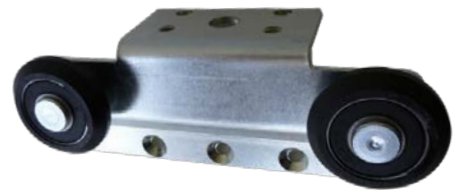
H7EAS
Rail H7



H9RAIL
Rail H9



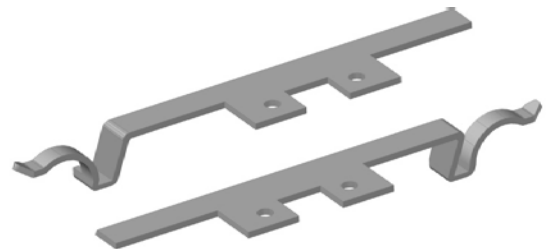
PAROU
Roller bearing



CL023
Oval doorstop



EASFREIN
Brake + Anti-unhinge system



MTB56
Hexagonal screw
5x6



TFC313
Metal screw
2.9x13



TFC1032
Metal screw
4.8x32



JPMTESACL7
Cylinder



ROIOVCE
Stainless cap



CLO22
Inset handle



AF316
Self-tapper 2.9x16



AFPI1016
Stainless screw 4.8x16



AFP445



AFP3545



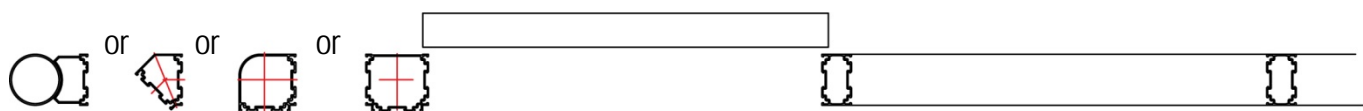
GUIBOIS
Supplied with 2 screws and 2 concrete plugs



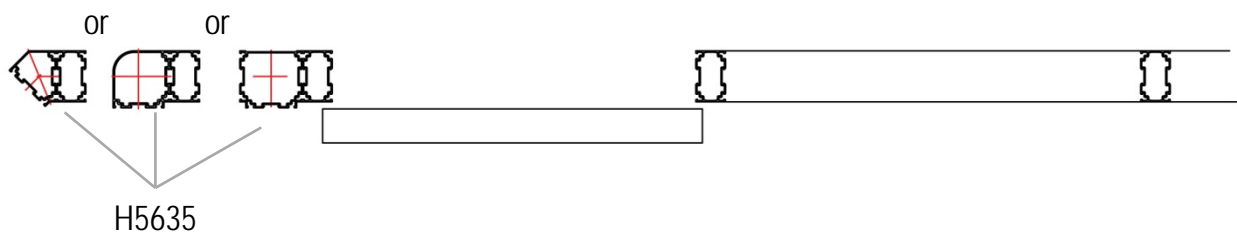
DOOR CONNECTION ON DIRECTIONAL POST

H5

Fitting the door outside the post

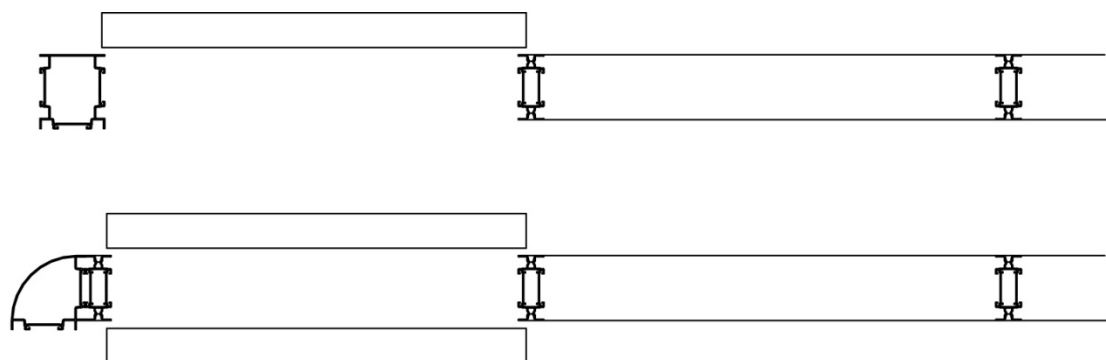


Fitting the door inside the post : adding an upright H5635 on the post



H7

Fitting the door on a 2D or inside the post 3D : adding an upright



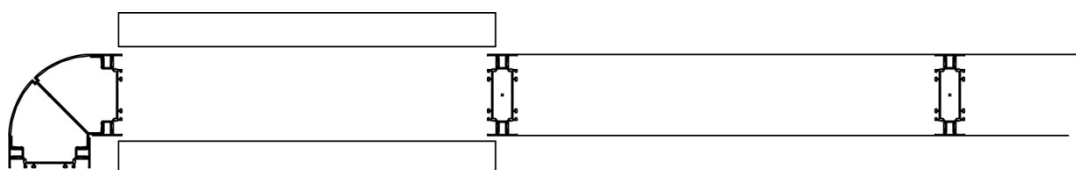
Integrated post cover trims



H9

Fitting the door inside the post : no extra upright to add

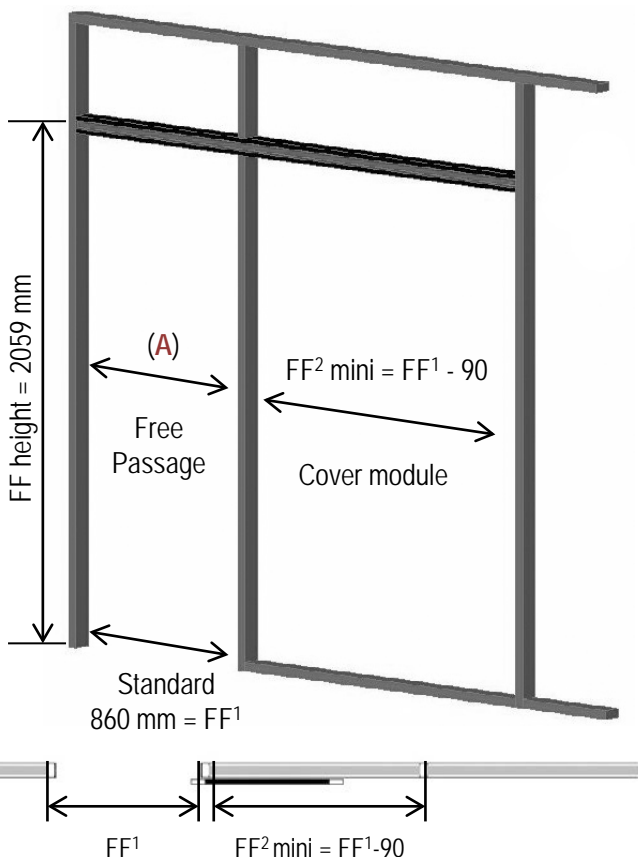
Post cover trims added



SINGLE DOOR - WOOD

ASSEMBLING FRAMEWORK AND EASY RAIL

Calculation for cover module (module against which the door opens) according to the free passage (A)



Calculation for opening and free passage (A) according to type of partition upright.

H5

Opening width = $FF^1 + 17$
Opening height = $FF^2 + 55$

(A) Free passage - maximum = $FF^1 - 113$

H7

Opening width = $FF^1 + 27$
Opening height = $FF^2 + 47$

(A) Free passage - maximum = $FF^1 - 103$

H9

Opening width = $FF^1 + 27$
Opening height = $FF^2 + 55$

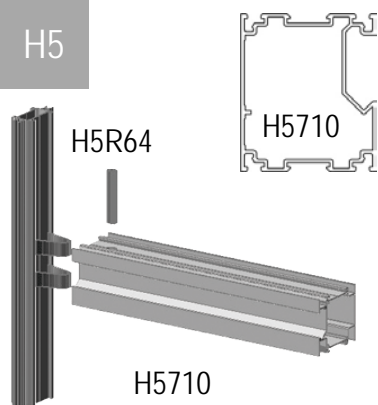
(A) Free passage - maximum = $FF^1 - 103$

Dimension of free passage with an opening width of 830 mm

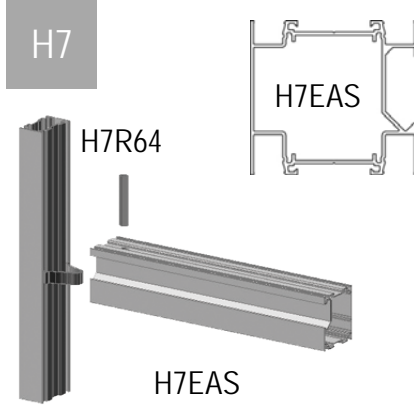
830mm	Alu door	Wood door	Glass door
H5	714.5mm	700mm	668mm
H7	714.5mm	700mm	668mm
H9	714.5mm	700mm	668mm

Fitting the continuous rail crossways with spring and excentric screw

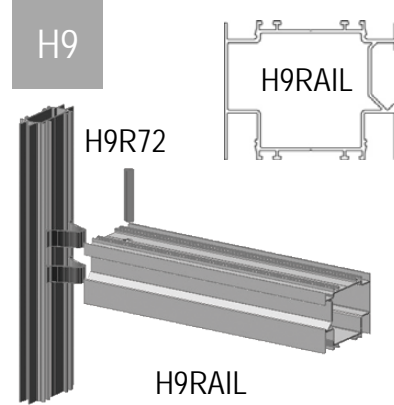
H5



H7



H9



FF = Dimensions between profiles = Inside dimension of the frame (without groove trim). Before fitting the Easy Rail, check that the floor is horizontal. If not horizontal, take the highest point for adjusting your rail.

SINGLE DOOR - WOOD

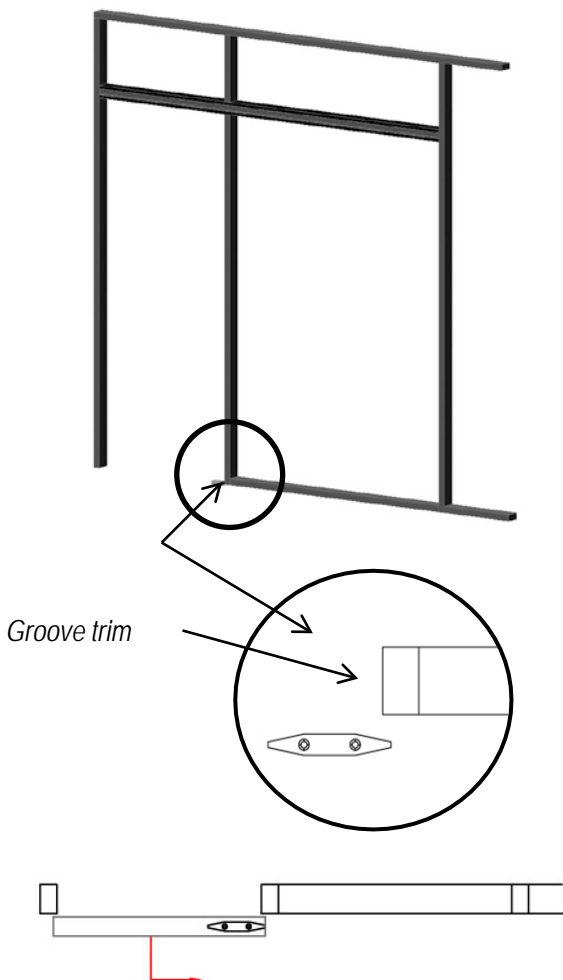
FITTING THE DOOR

1 POSITION OF THE GUIBOIS GUIDE

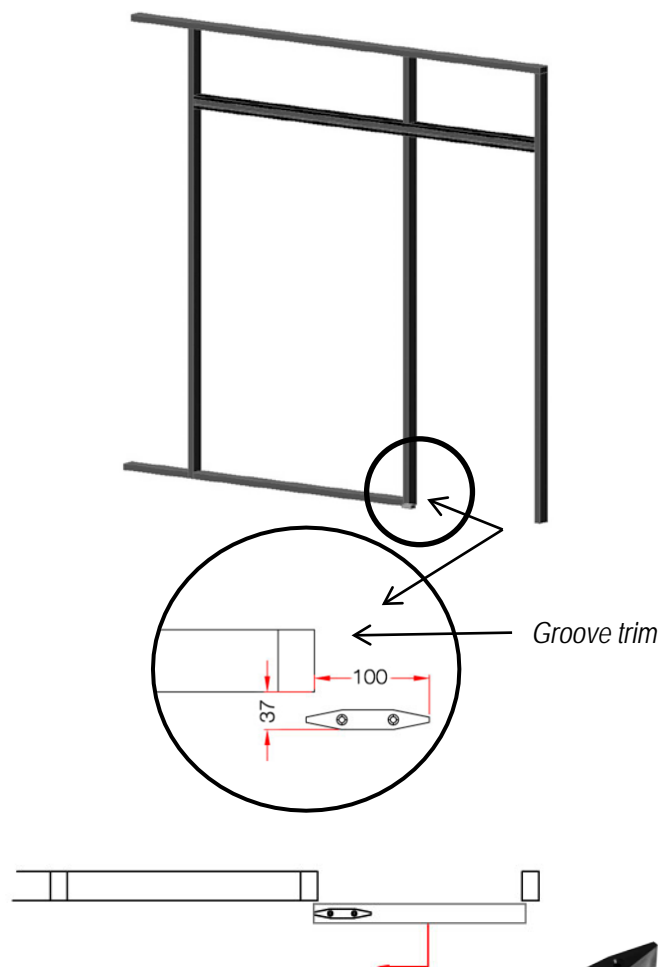
Place the GUIBOIS floor guide next to the cover module (module on which the door opens).



OPENING ON THE RIGHT



OPENING ON THE LEFT

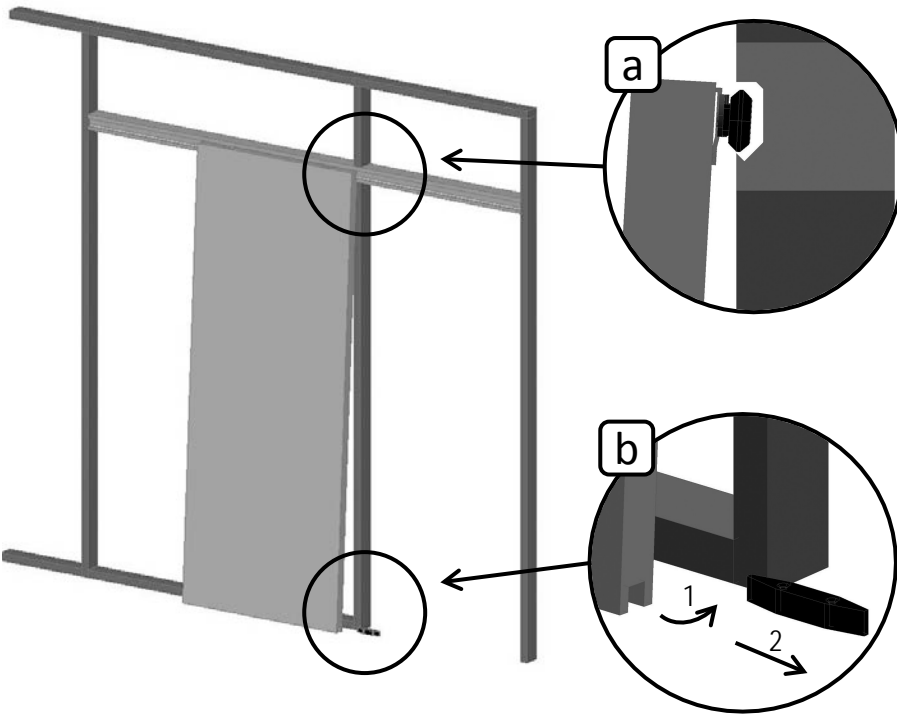

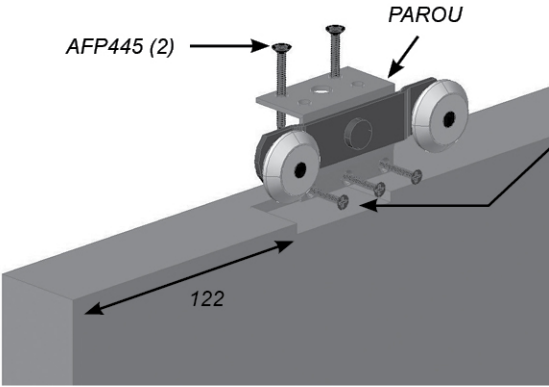


The guides on the floor are fixed by 2 ordinary plugs.



SINGLE DOOR - WOOD FITTING THE DOOR

2

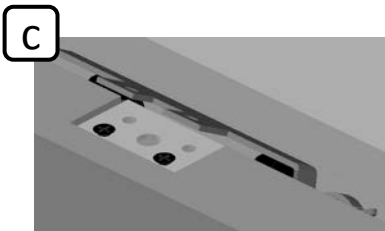


a Place the door just in front of the floor guide, beside the cover module. Slightly tilt it to put the rollers in the rail.

b Push the door onto the partition and engage the door in the guide.

C Engage the EASFREIN anti-unhinge system plates

d Screw the EASFREIN with the screws MTB56 (4).



SINGLE DOOR - WOOD

FITTING THE DOOR

3 FIXING THE STOPS CL023

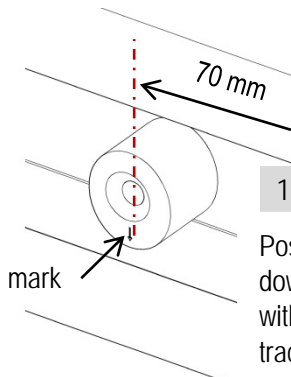
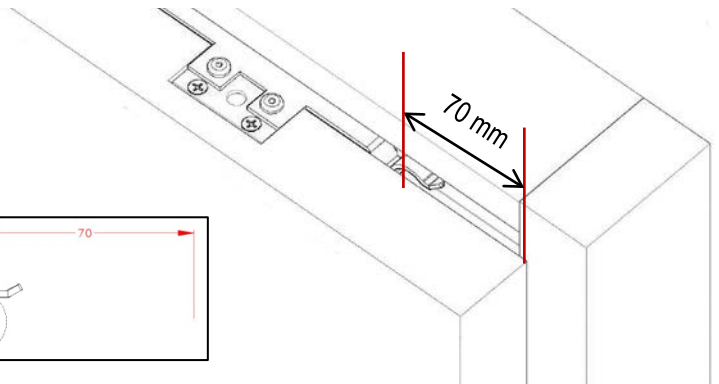
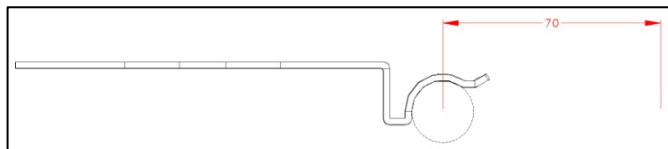
CAS 1

Door in CLOSED position

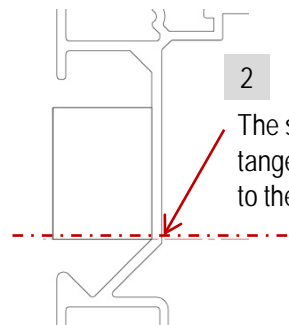


Lock side

In 'door closed' position, mark the line of the stop CL023 on the Easy Rail at 70 mm from the edge of the door upright



Position the stop mark downwards compared with the line initially traced



The stop must be at a tangent to the rail end

Stop CL023



3

Pre-drill Ø 3



4

Screw TFC1032

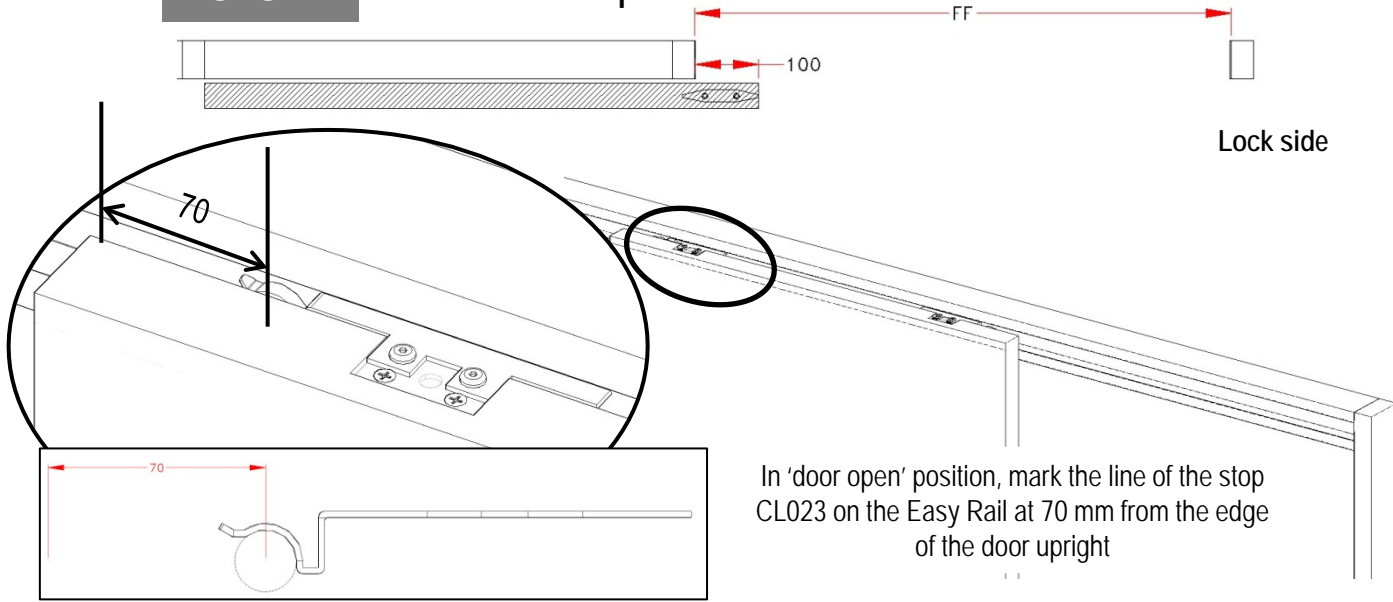


SINGLE DOOR - WOOD FITTING THE DOOR

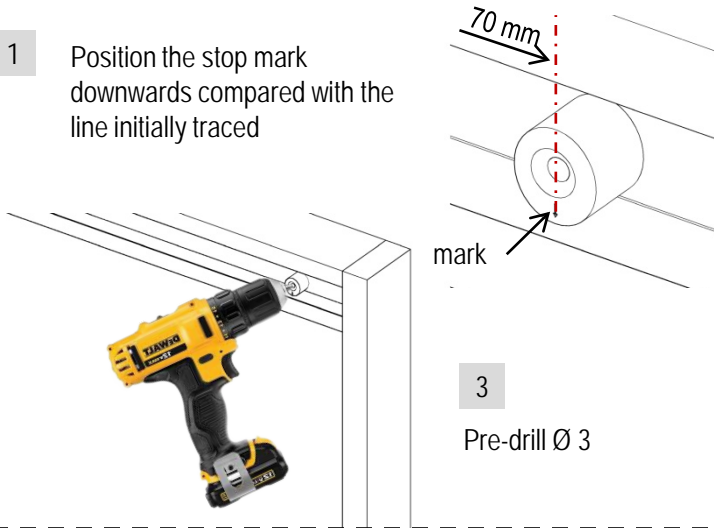
3 FIXING THE STOPS CL023 (continued)

CAS 2

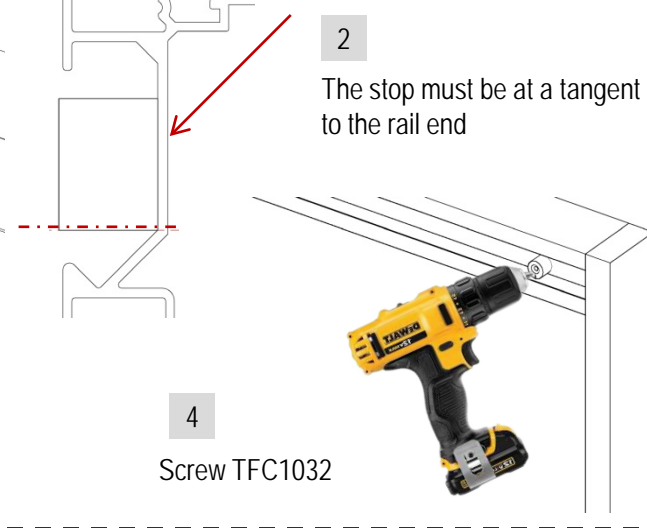
Door in OPEN position



- 1 Position the stop mark downwards compared with the line initially traced



- 2 The stop must be at a tangent to the rail end

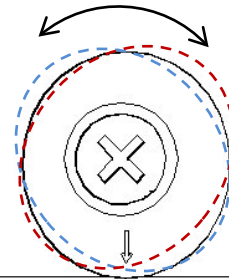


- 3 Pre-drill $\varnothing 3$

- 4 Screw TFC1032

4 ADJUSTING THE STOP CL023

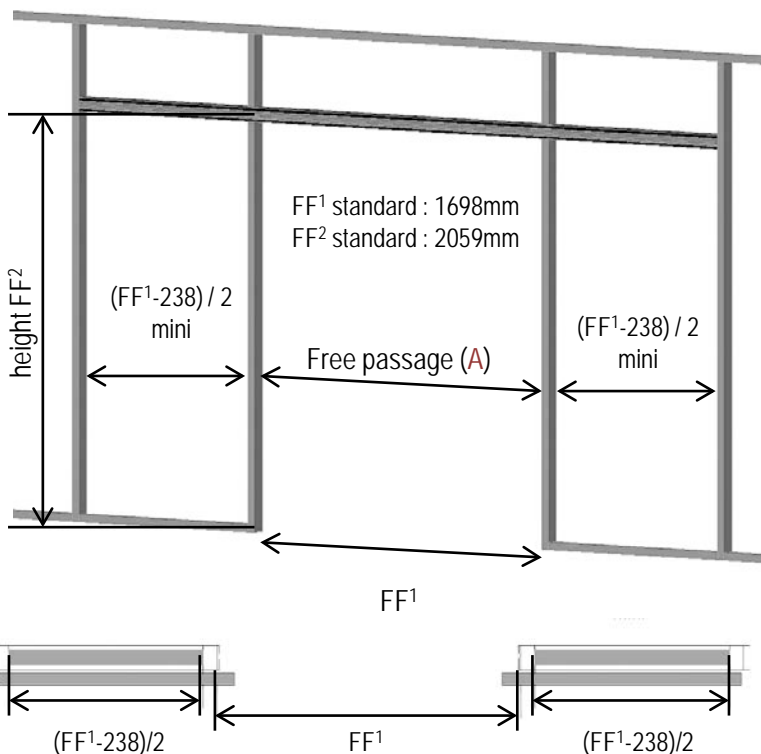
By turning the oval doorstop, it is possible to influence the brake on the door



DOUBLE DOOR - WOOD

ASSEMBLING FRAMEWORK AND EASY RAIL

Calculation for cover module (module against which the door opens) according to the free passage (A)



Calculation for opening and free passage (A) according to type of partition upright.

H5 Opening width = $(FF1+25)/2$
Opening height = $FF2+55$
(A) Free passage - maximum = $FF1-213$

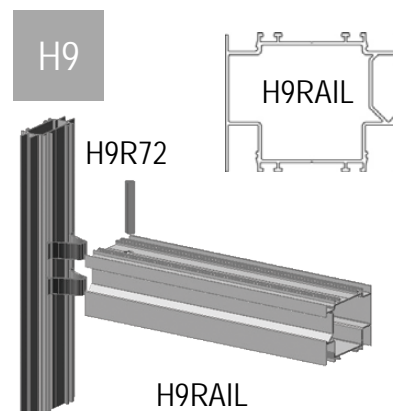
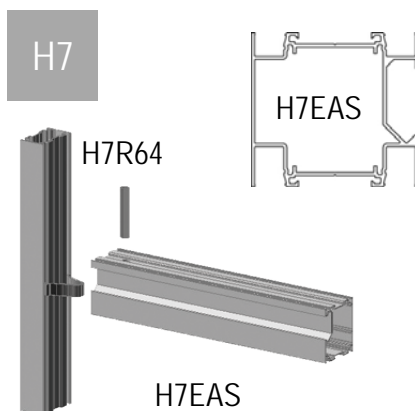
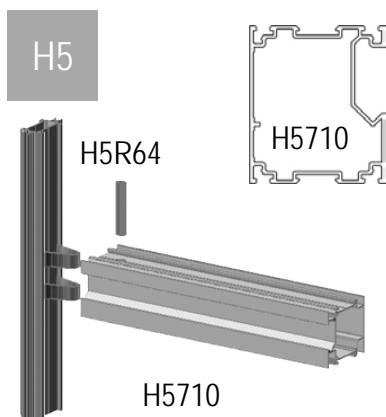
H7 Opening width = $(FF1+35)/2$
Opening height = $FF2+47$
(A) Free passage - maximum = $FF1-203$

H9 Opening width = $(FF1+35)/2$
Opening height = $FF2+55$
(A) Free passage - maximum = $FF1-203$

Dimension of free passage with an opening width of 830 + 830 mm

830 + 830 mm	Alu door	Wood door	Glass door
H5	1451 mm	1422 mm	1380 mm
H7	1451 mm	1422 mm	1380 mm
H9	1451 mm	1422 mm	1380 mm

Fitting the continuous rail crossways with spring and excentric screw



FF = Dimensions between profiles = Inside dimension of the frame (without groove trim). Before fitting the Easy Rail, check that the floor is horizontal. If not horizontal, take the highest point for adjusting your rail.

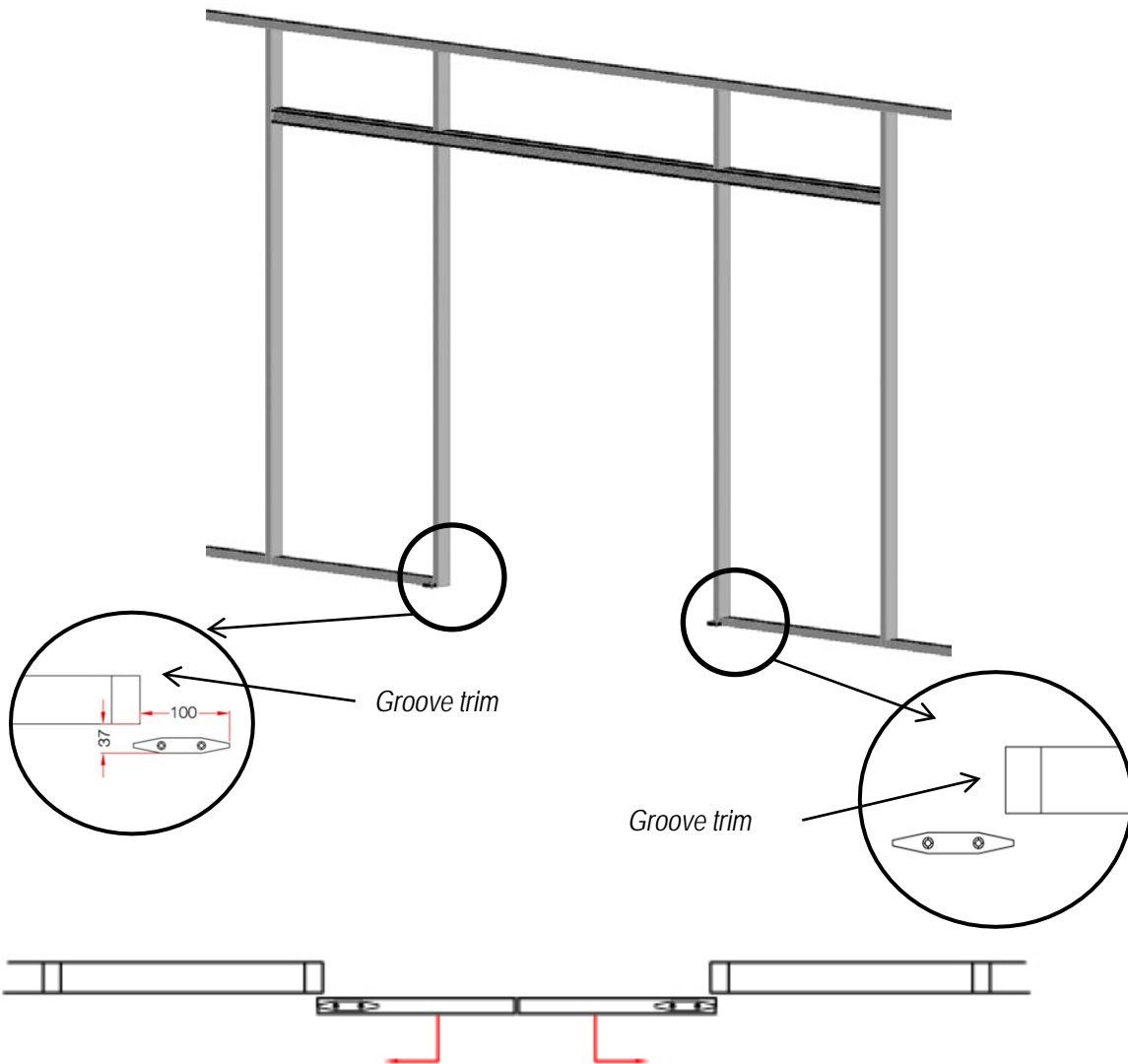
DOUBLE DOOR - WOOD

FITTING THE DOOR

1

POSITION OF THE GUIBOIS GUIDE

Place the GUIBOIS floor guide next to the cover module (module on which the door opens).

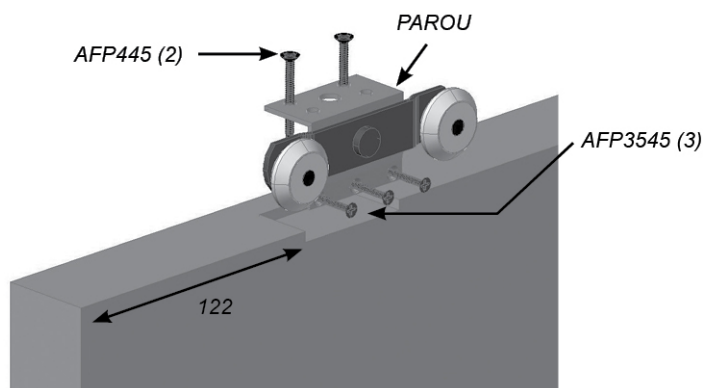


The guides on the floor are fixed by 2 ordinary plugs.

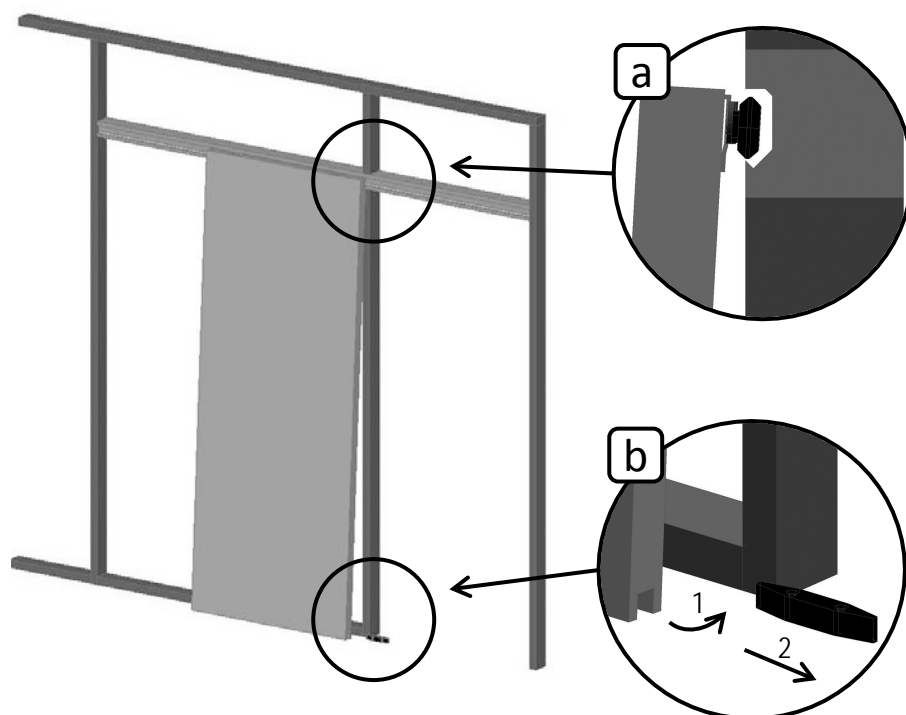
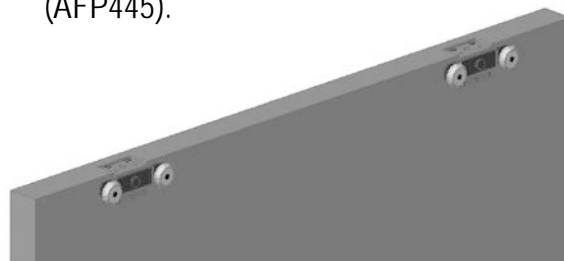


DOUBLE DOOR - WOOD FITTING THE DOOR

2 HANGING THE ROLLER BEARING



Place the bearing in the machined part on the door with suitable wood screws (AFP445).



a Place the door just in front of the floor guide, beside the cover module. Slightly tilt it to put the rollers in the rail.

b Push the door onto the partition and engage the door in the guide.

c Engage the EASFREIN anti-unhinge system plates

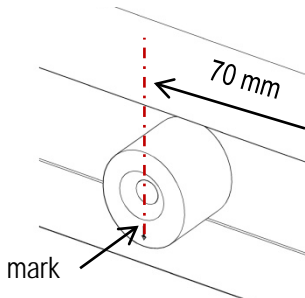
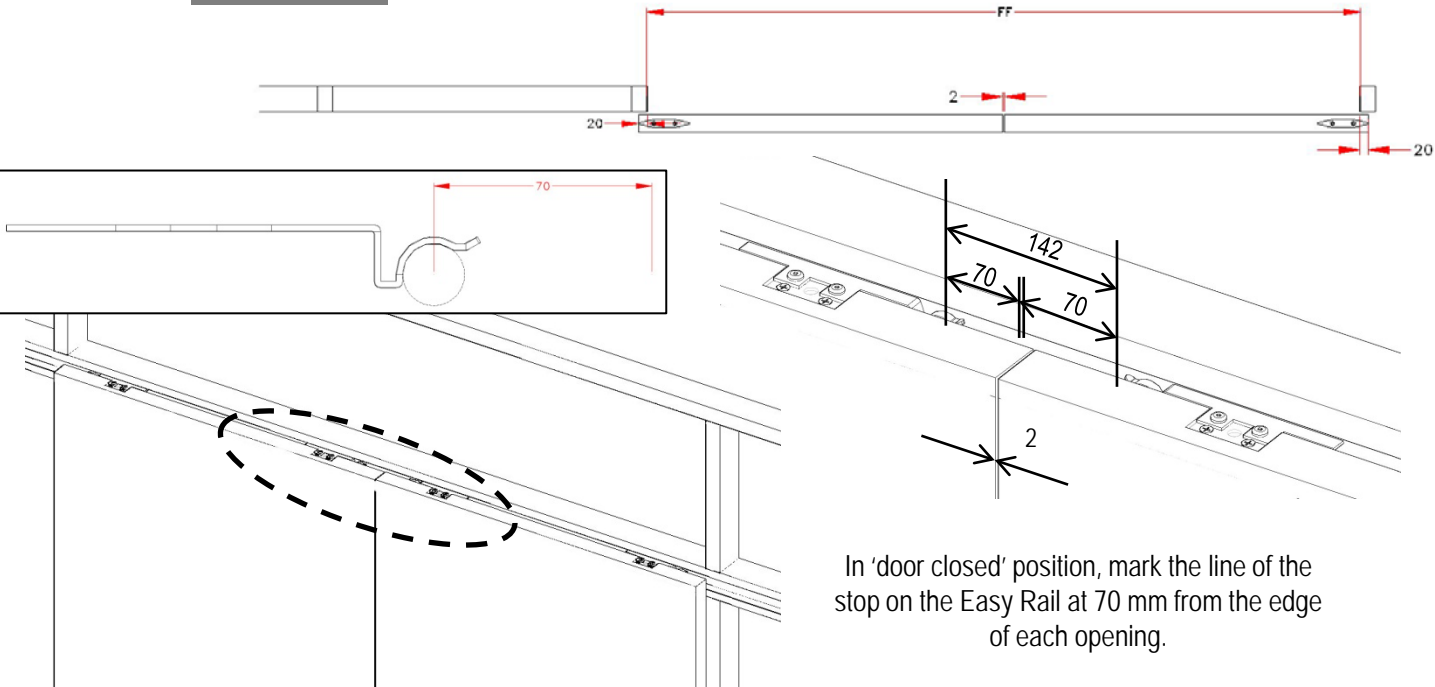
d Screw the EASFREIN with the screws MTB56 (4).



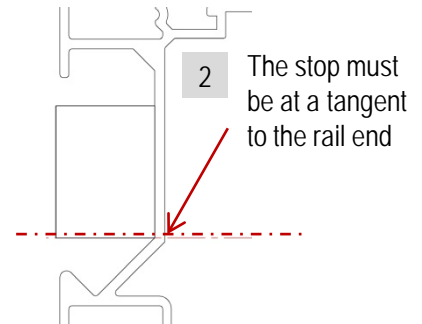
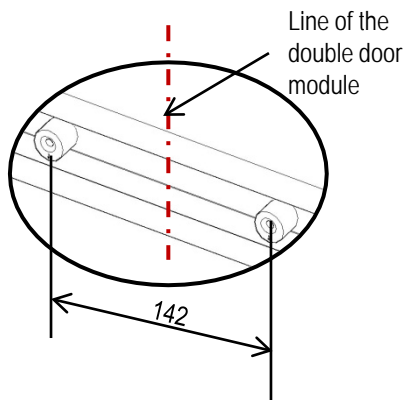
DOUBLE DOOR - WOOD FITTING THE DOOR

3 FIXING THE STOPS CL023

CAS 1 Door in CLOSED position



1 Position the stop mark downwards compared with the line initially traced



3 Pre-drill Ø 3



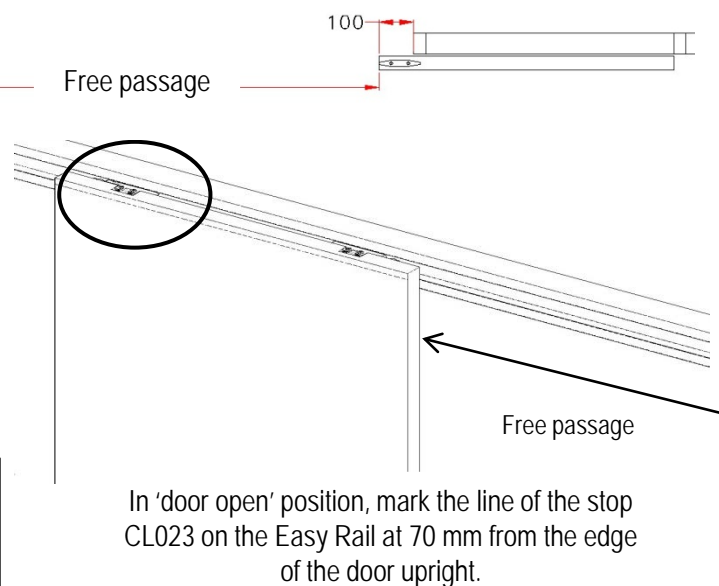
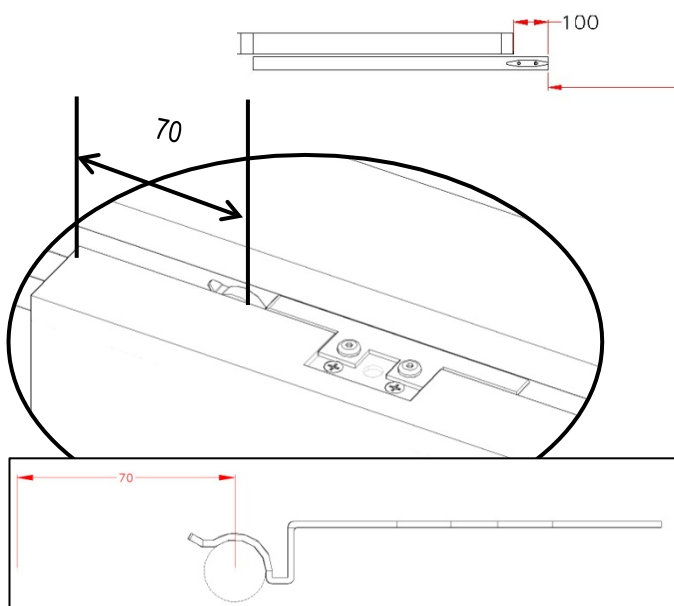
4 Screw TFC1032



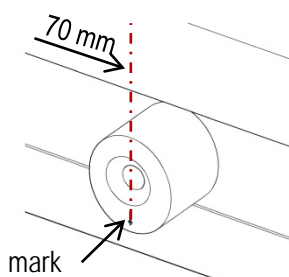
DOUBLE DOOR - H3 FITTING THE DOOR

CAS 2

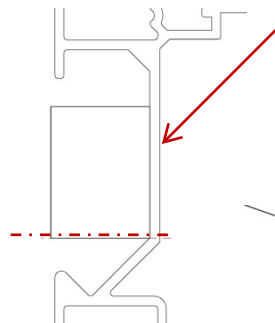
Door in OPEN position



- 1 Position the stop mark downwards compared with the line initially traced



- 2 The stop must be at a tangent to the rail end



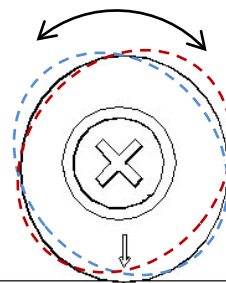
- 3 Pre-drill Ø 3

- 4 Screw TFC1032



4 ADJUSTING THE STOP CL023

By turning the oval doorstop, it is possible to influence the brake on the door





HOYEZ SAS
71 rue of Lille
F. 59710 Avelin
T. +33 (0)3 28 55 11 55

hoyez@hoyez.com
www.hoyez.com

