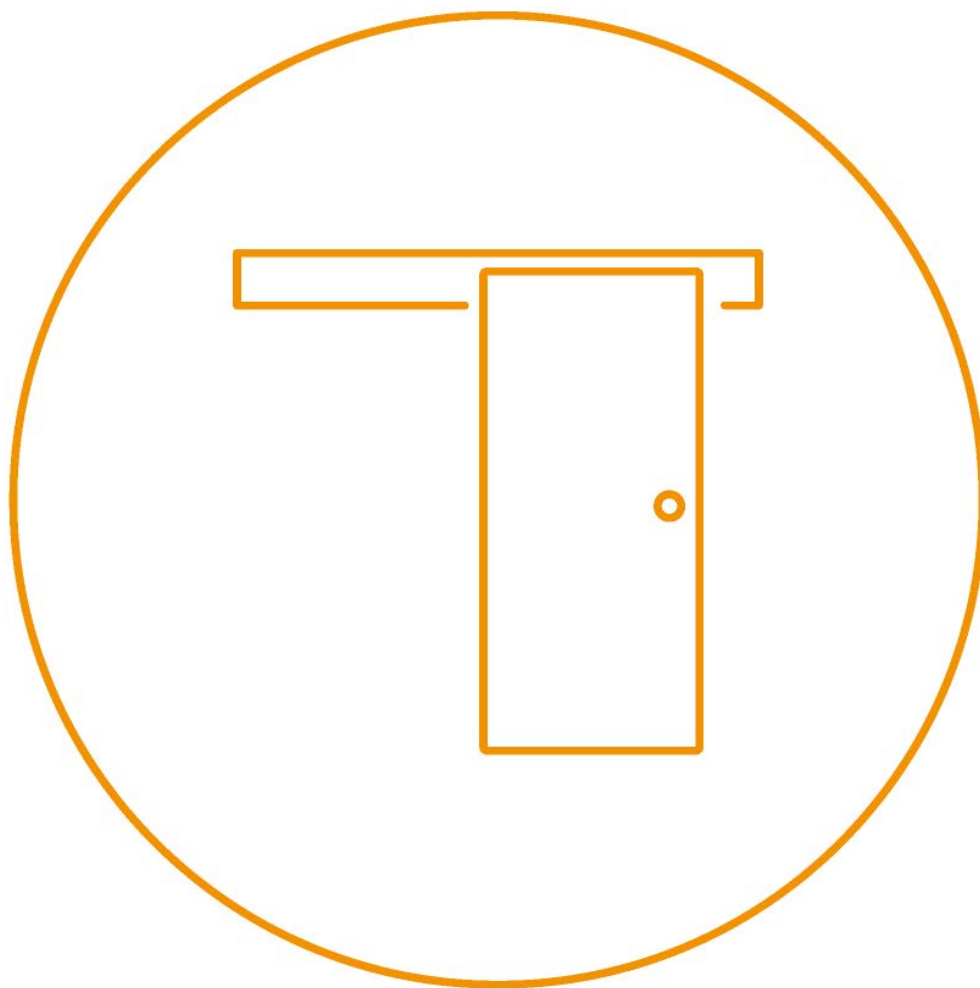


System EASY

Sliding door - Glass



Assembly notice

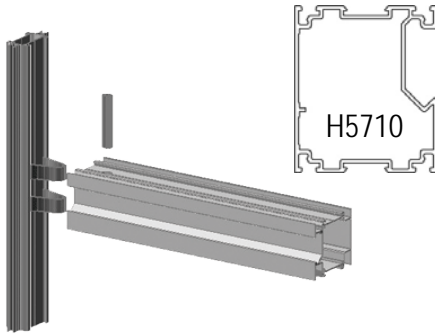
Instructions for assembling
our products correctly

04/2015

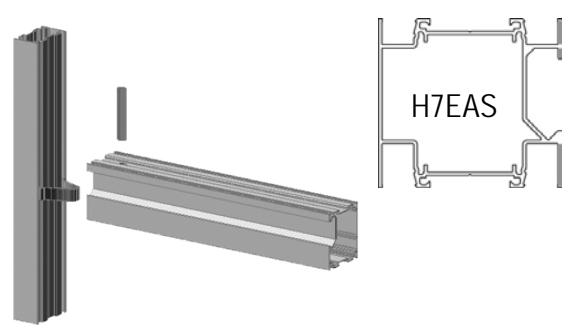
CONTENTS

Profiles and Accessories	2
Door connections	4
SINGLE DOOR - GLASS	
Assembling the framework and Easy Rail	5
Fitting the door	6 to 10
DOUBLE DOOR - GLASS	
Assembling the framework and Easy Rail	11
Fitting the door	12 to 16

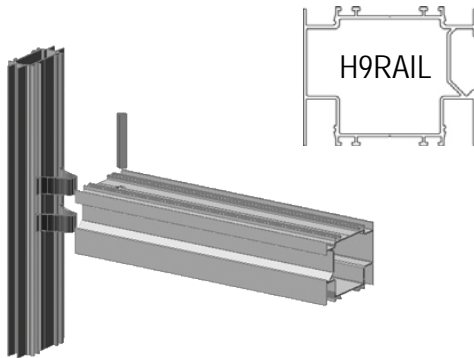
H5710
Rail H5



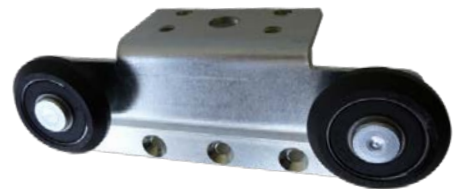
H7EAS
Rail H7



H9RAIL
Rail H9



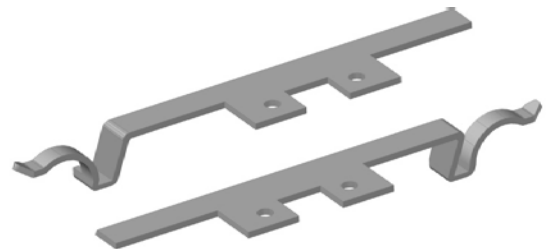
PAROU
Roller bearing



CL023
*Oval
doorstop*



EASFREIN
Brake + Anti-unhinge system



MTB56
*Hexagonal
screw
5x6*



TFC313
*Metal screw
2.9x13*



TFC1032
*Metal screw
4.8x32*



ECROUH8
Nut H8



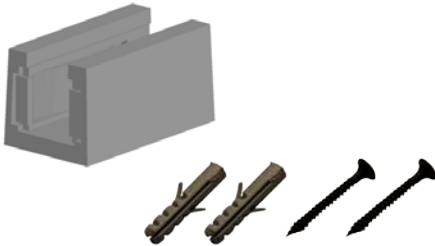
ECPLAH8
Flat nut H8



MFC48
Countersunk cross-head metal screws 4x8



GUIVERX
Stainless



PINVER
Clamp for glass door (2)



EMPINVER
End-pieces



Glass of 8mm

ROND814D
Spring washer



CAPVER
Cover for clamps



MH816
Fixing bolt



PITV3005
Pull bar



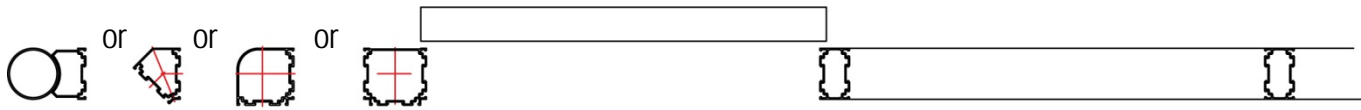
PITV2512S
Handle with lock



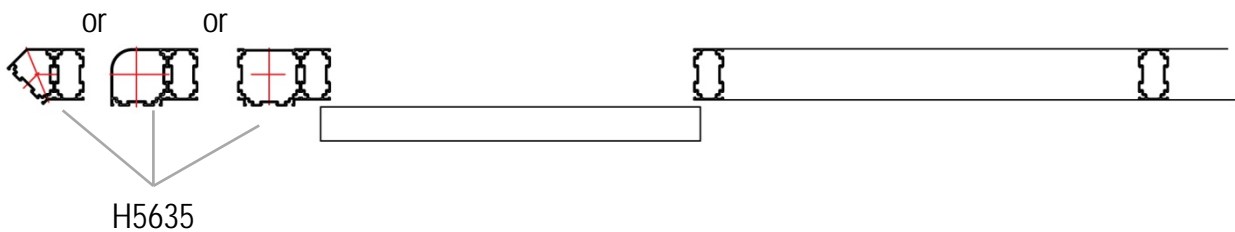
DOOR CONNECTION ON DIRECTIONAL POST

H5

Fitting the door outside the post

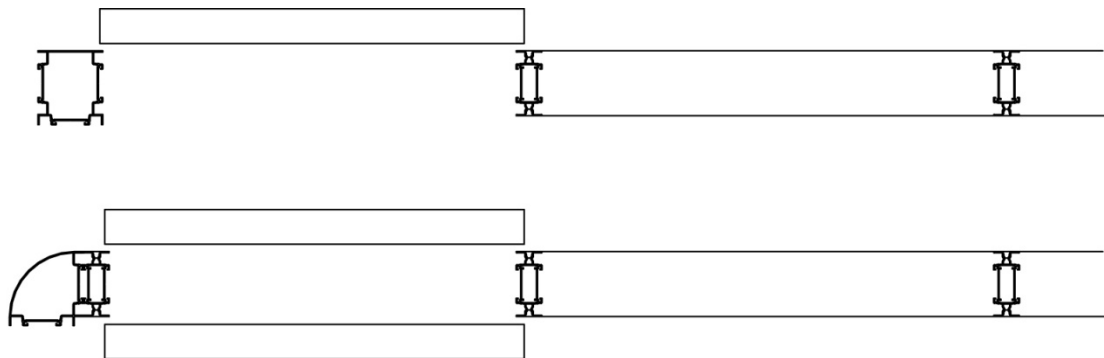


Fitting the door inside the post : adding an upright H5635 on the post



H7

Fitting the door on a 2D or inside the post 3D : adding an upright



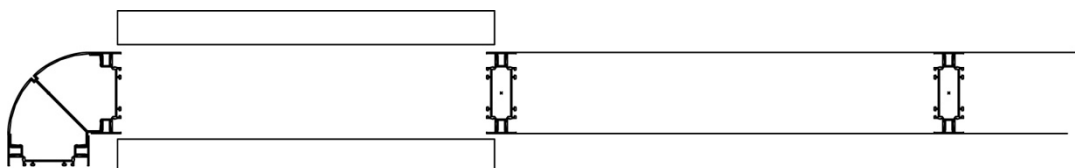
Integrated post cover trims



H9

Fitting the door inside the post : no extra upright to add

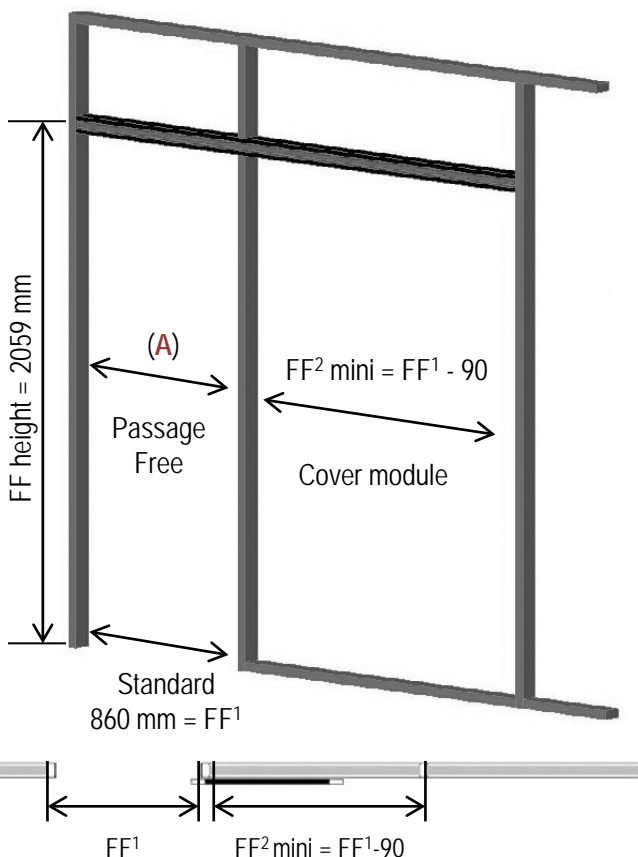
Post cover trims added



SINGLE DOOR - GLASS

ASSEMBLING FRAMEWORK AND EASY RAIL

Calculation for cover module (module against which the door opens) according to the free passage (A)



Calculation for opening and free passage (A) according to type of partition upright.

H5

Opening width = FF¹+27
Opening height = FF²+21

(A) Free passage - maximum = FF-135

H7

Opening width = FF¹+37
Opening height = FF²+13

(A) Free passage - maximum = FF-125

H9

Opening width = FF¹+37
Opening height = FF²+21

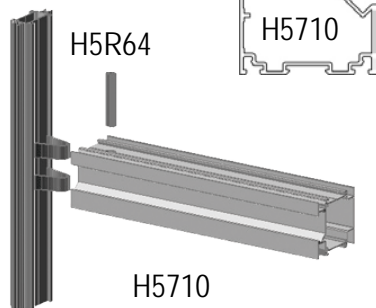
(A) Free passage - maximum = FF-125

Dimension of free passage with an opening width of 830 mm

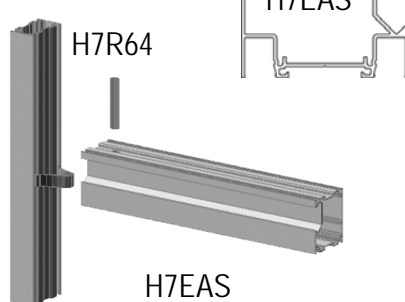
830mm	Alu door	Wood door	Glass door
H5	714.5mm	700mm	668mm
H7	714.5mm	700mm	668mm
H9	714.5mm	700mm	668mm

Fitting the continuous rail crossways with spring and excentric screw

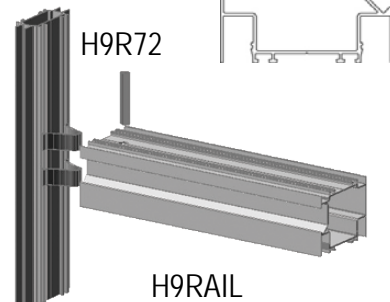
H5



H7



H9

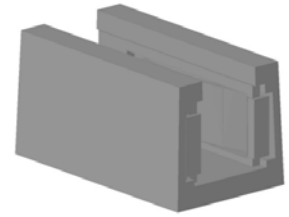


FF = Dimensions between profiles = Inside dimension of the frame (without groove trim). Before fitting the Easy Rail, check that the floor is horizontal. If not horizontal, take the highest point for adjusting your rail.

SINGLE DOOR - GLASS FITTING THE DOOR

1 POSITION OF THE GUIVERX GUIDE

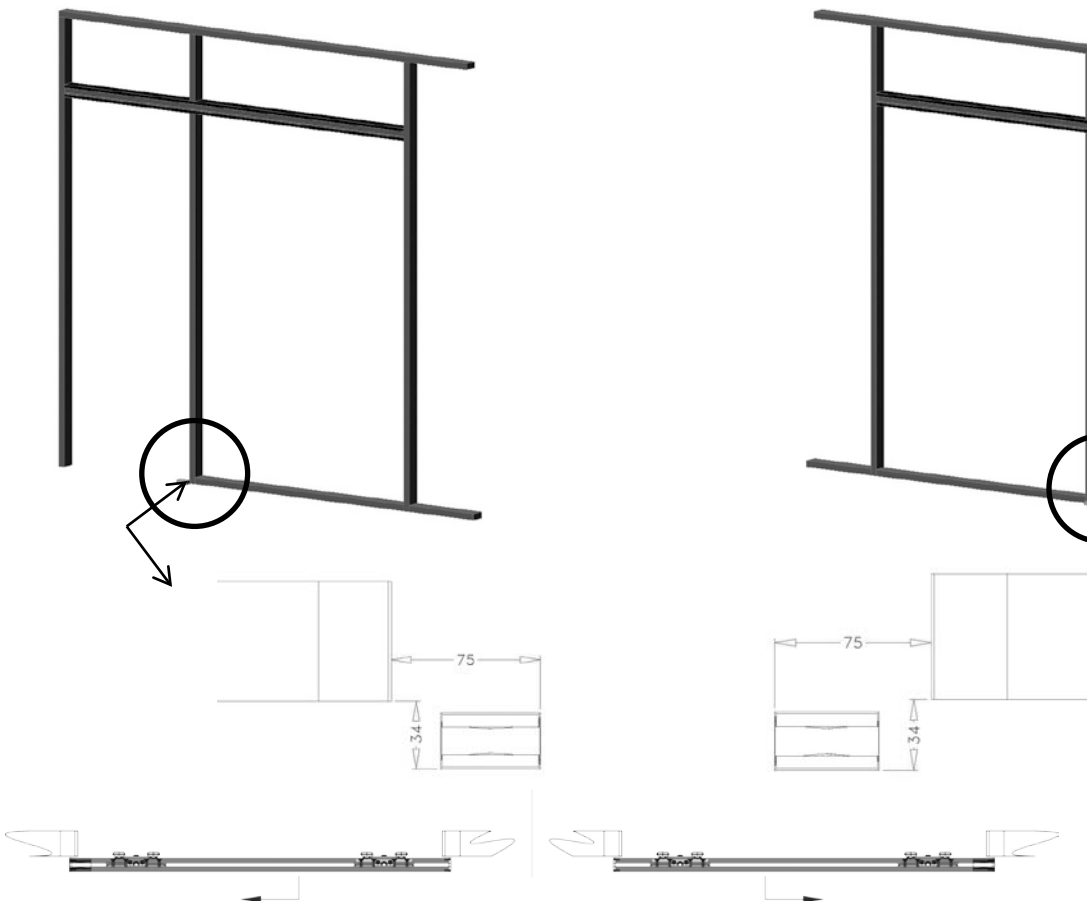
- Place the GUIVERX on the floor next to the cover module (module on which the door opens)



Adaptable for glass from 8 to 12 mm

OPENING ON THE RIGHT

OPENING ON THE LEFT



The floor guide is fixed by 2 ordinary plugs



SINGLE DOOR - GLASS

FITTING THE DOOR

2

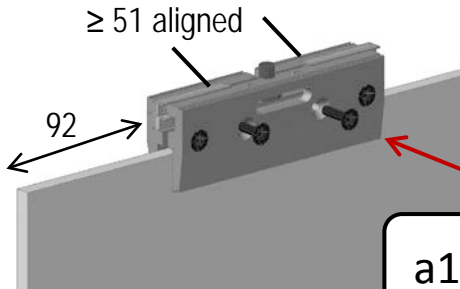
FITTING ACCESSORIES

Slacken the screws and separate the spacers to allow the bearing to pass.

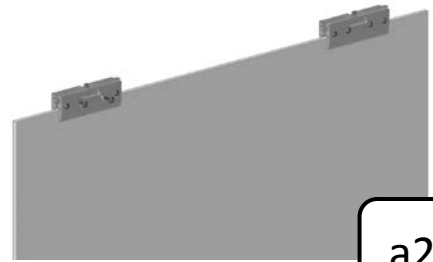
Place the clamps at 92 mm from the edge of the door. Tighten the 4 BTR screws of the clamp

a Fitting the clamps on the door

Refer to the notice supplied with the clamps

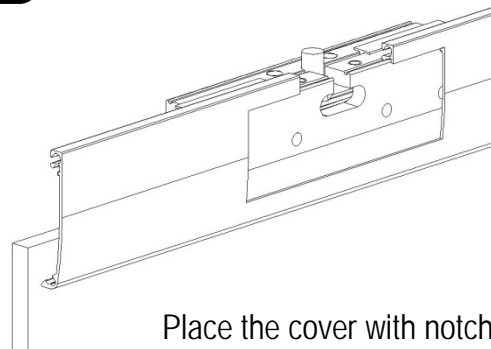
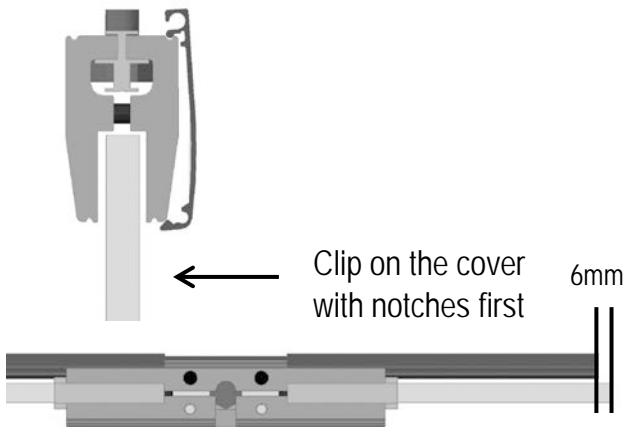


a1



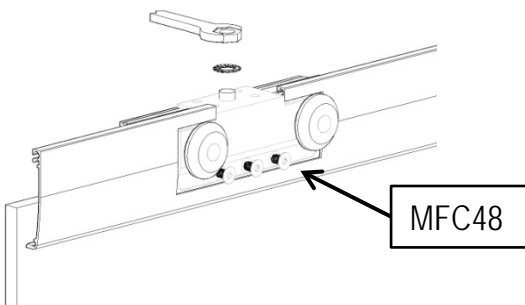
a2

b Clipping on the clamp covers



Place the cover with notches beside the roller bearings. The cover must be in the line of the clamps.

c Fitting the bearings



Place the bearings on the clamps, and tighten the bottom nut M8 with its spring washer on the centre screw.

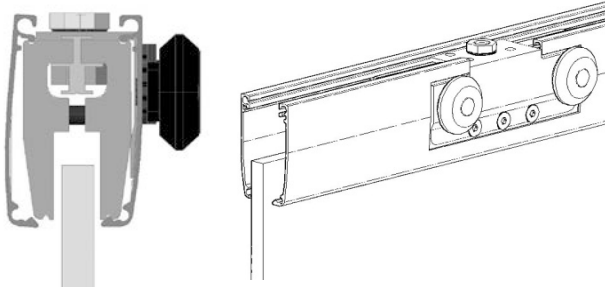
Also tighten the 3 screws MFC48 on the clamp.

SINGLE DOOR - GLASS

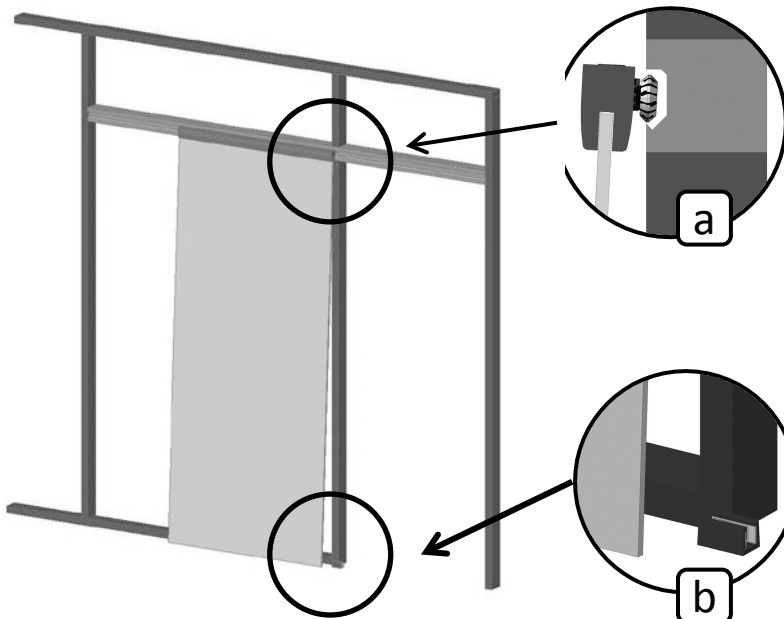
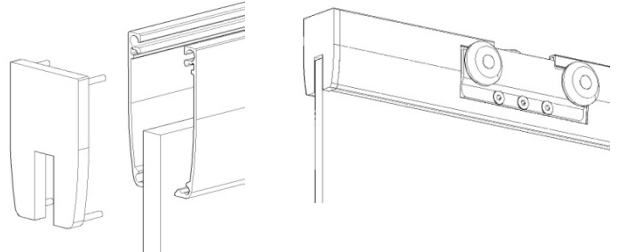
FITTING THE DOOR

2 FITTING ACCESSORIES (continued)

Clipping on the other cover

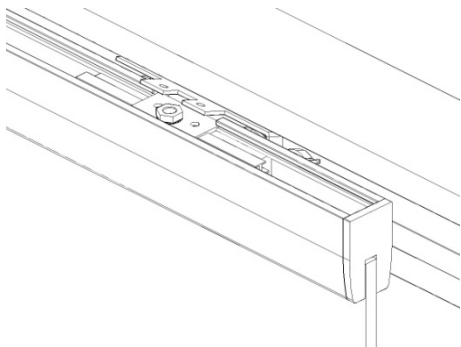


Fitting the end piece



a Place the door just in front of the guide, on the floor, beside the cover module. Slightly tilt it to put the rollers in the rail.

b Push the door onto the partition and engage the door in the floor guide



c

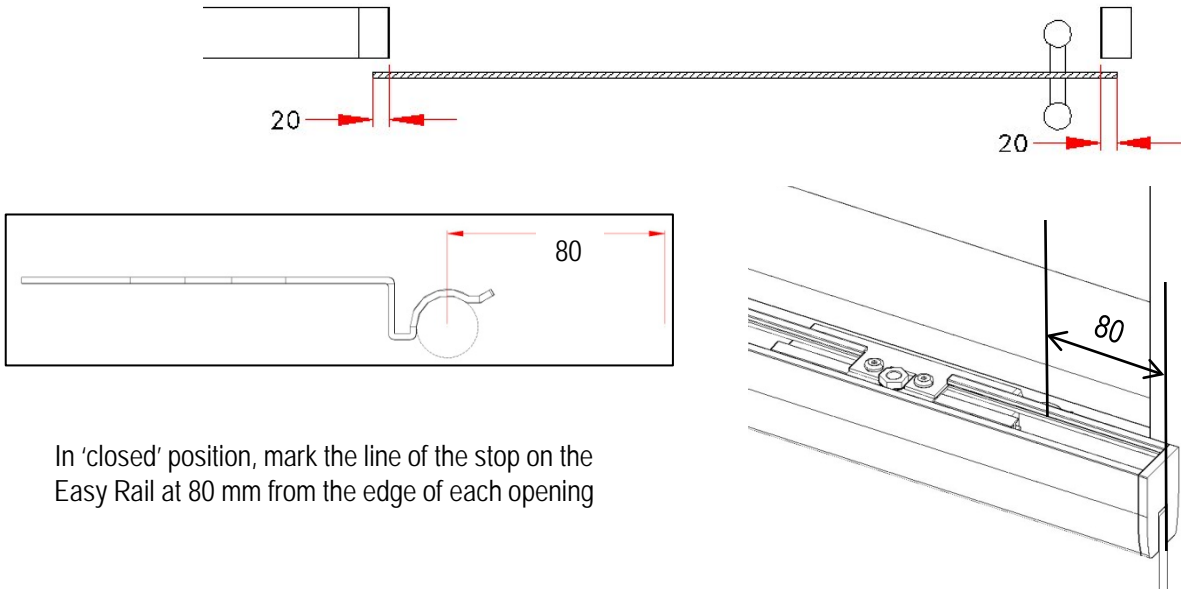
Engage the EASFREIN on the bearing and screw in the MTB56



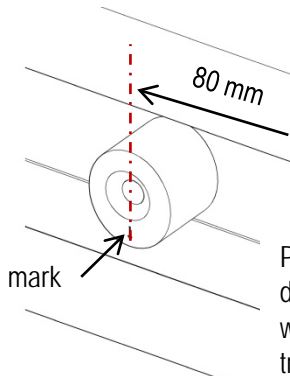
SINGLE DOOR - GLASS FITTING THE DOOR

3 FIXING THE STOPS CL023

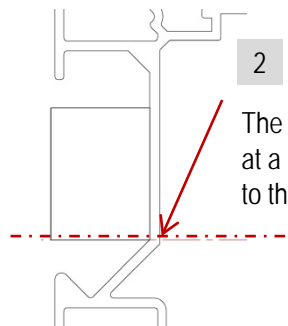
CAS 1 Door in CLOSED position



In 'closed' position, mark the line of the stop on the Easy Rail at 80 mm from the edge of each opening



1
Position the stop mark downwards compared with the line initially traced



2
The stop must be at a tangent to the rail end

Stop CL023



mark

3

Pre-drill Ø 3



4

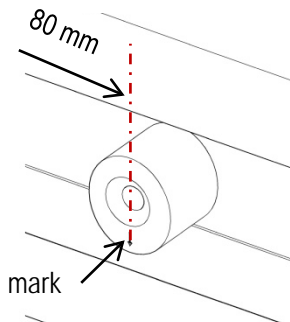
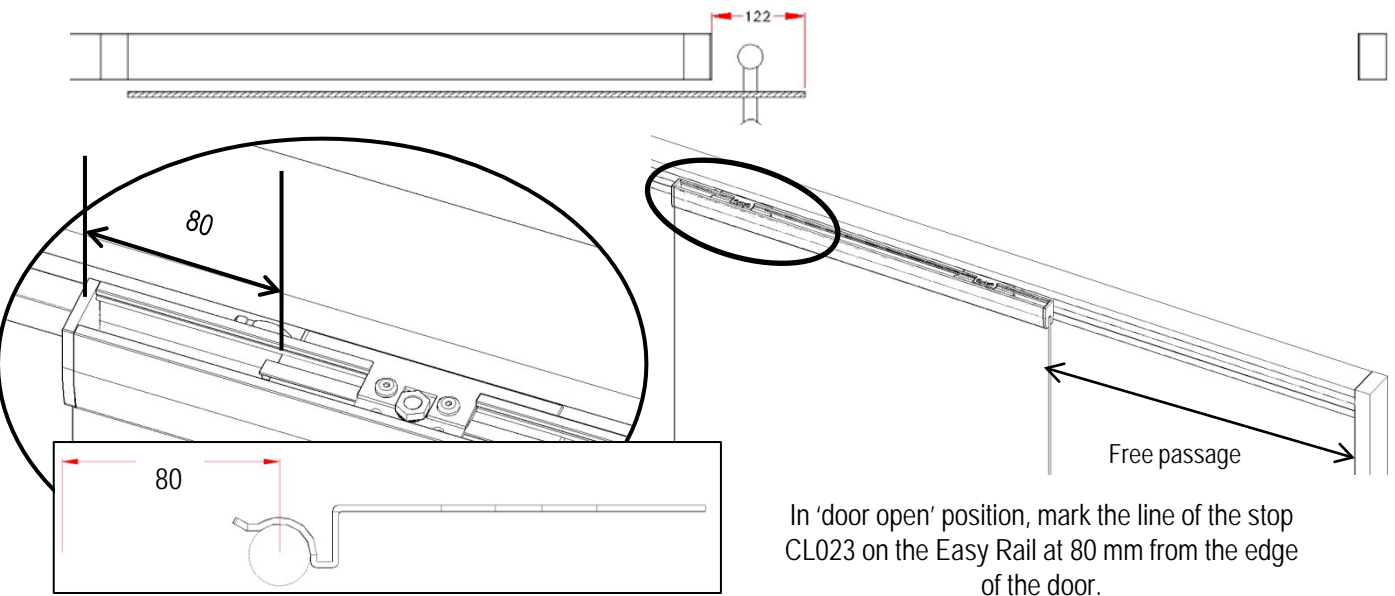
Screw TFC1032



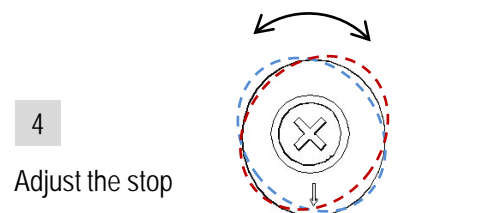
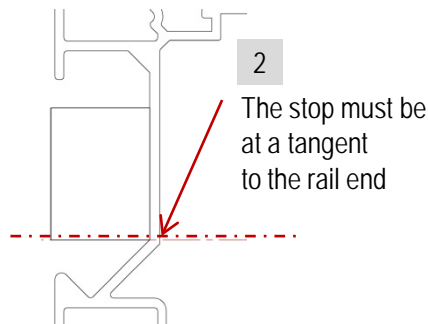
SINGLE DOOR - GLASS FITTING THE DOOR

3 FIXING THE STOPS CL023 (continued)

CAS 2 Door in OPEN position



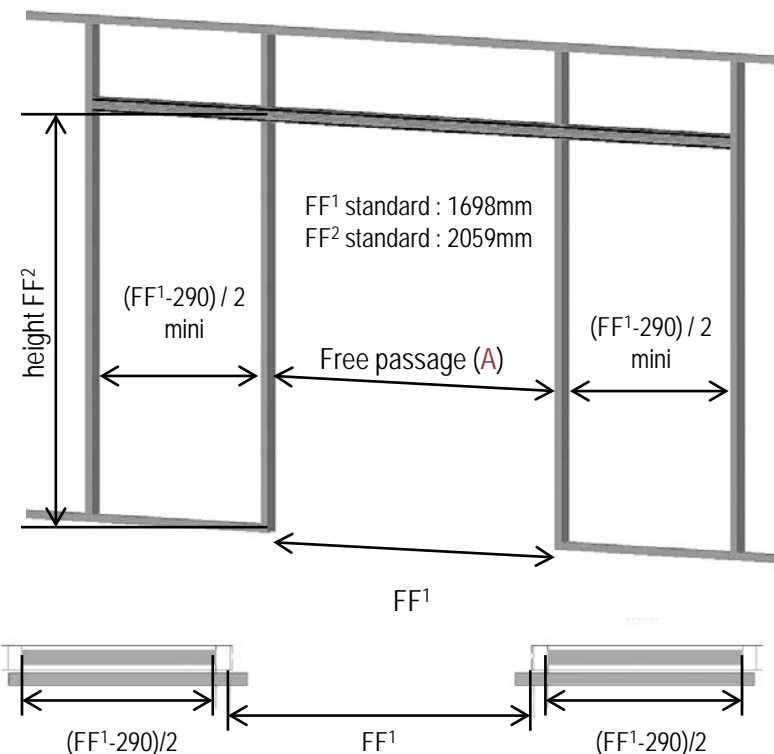
1 Position the stop mark downwards compared with the line initially traced



DOUBLE DOOR - GLASS

ASSEMBLING FRAMEWORK AND EASY RAIL

Calculation for cover module (module against which the door opens) according to the free passage (A)



Calculation for opening and free passage (A) according to type of partition upright.

H5

Opening width = $(FF^1+17)/2$

Opening height = FF^2+21

(A) Free passage - maximum = FF^1-257

H7

Opening width = $(FF^1+27)/2$

Opening height = FF^2+13

(A) Free passage - maximum = FF^1-247

H9

Opening width = $(FF^1+27)/2$

Opening height = FF^2+21

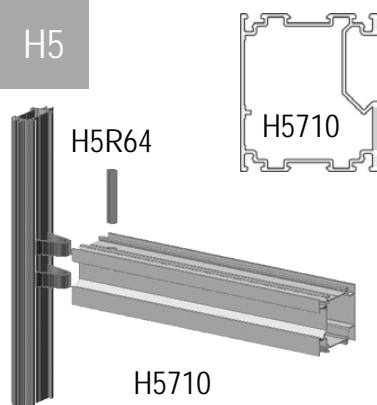
(A) Free passage - maximum = FF^1-247

Dimension of free passage with an opening width of 830 + 830 mm

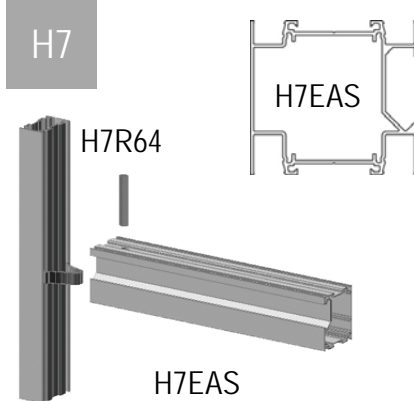
830 + 830 mm	Alu door	Wood door	Glass door
H5	1451 mm	1422 mm	1380 mm
H7	1451 mm	1422 mm	1380 mm
H9	1451 mm	1422 mm	1380 mm

Fitting the continuous rail crossways with spring and excentric screw

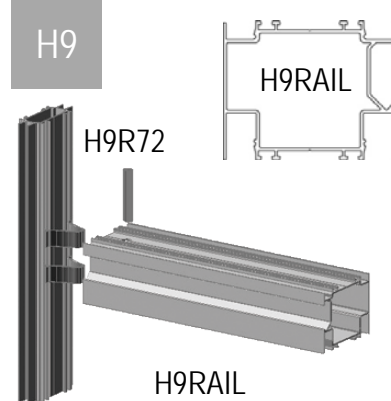
H5



H7



H9



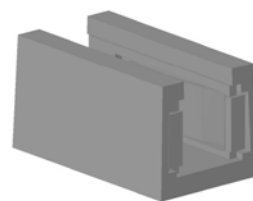
FF = Dimensions between profiles = Inside dimension of the frame (without groove trim). Before fitting the Easy Rail, check that the floor is horizontal. If not horizontal, take the highest point for adjusting your rail.

DOUBLE DOOR - GLASS

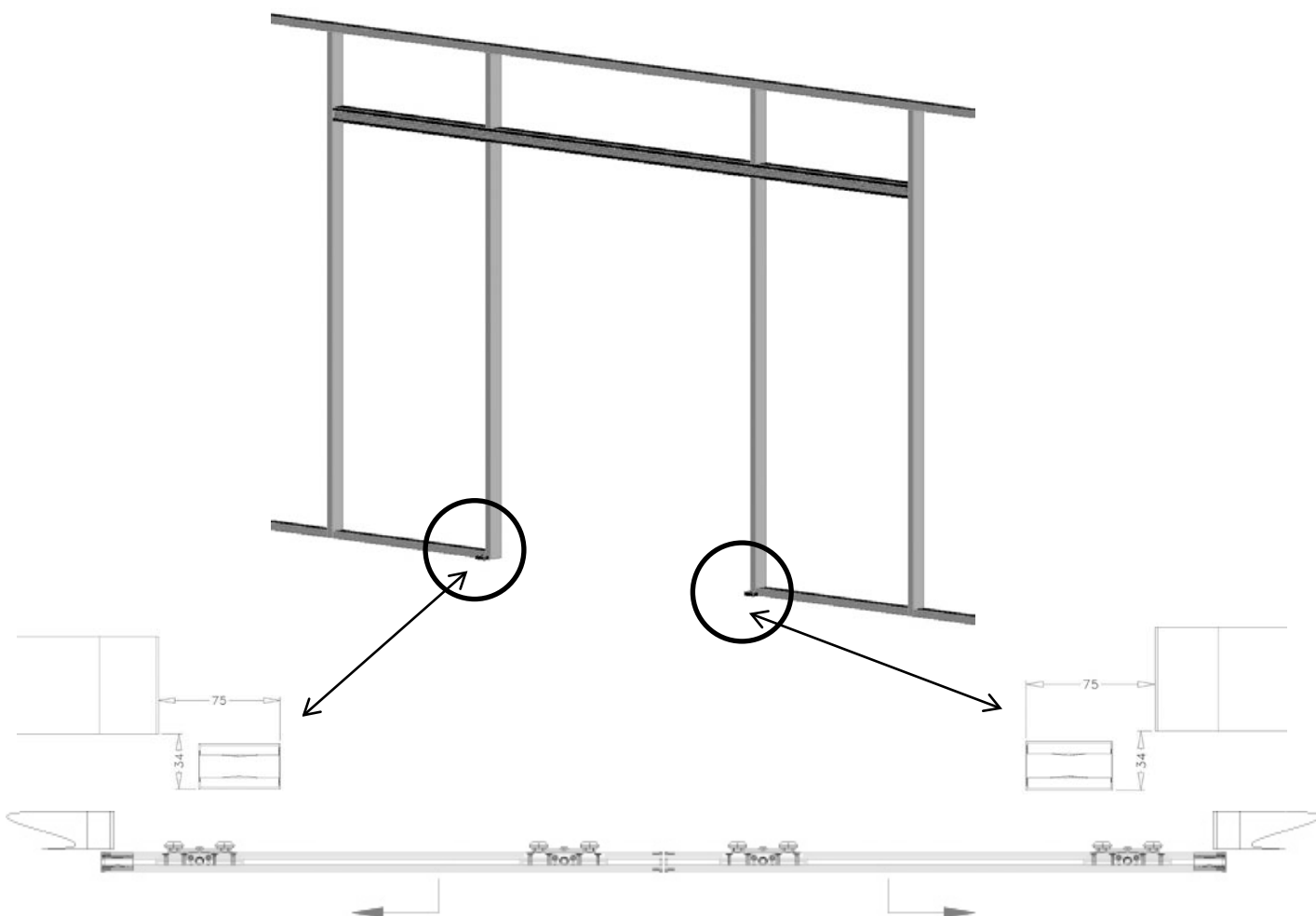
FITTING THE DOOR

1 POSITION OF GUIDE CL019

- Place the GUIVERX guide on the floor next to the cover module (module on which it opens)



Adaptable for glass from 8 to 12 mm



The guides on the floor are fixed by 2 ordinary plugs.



DOUBLE DOOR - GLASS

FITTING THE DOOR

2

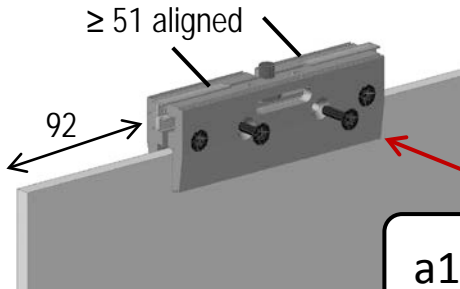
FITTING ACCESSORIES

Slacken the screws and separate the spacers to allow the bearing to pass.

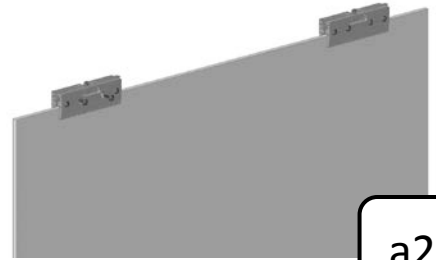
Place the clamps at 92 mm from the edge of the door. Tighten the 4 BTR screws of the clamp

a Fitting the clamps on the door

Refer to the notice supplied with the clamps

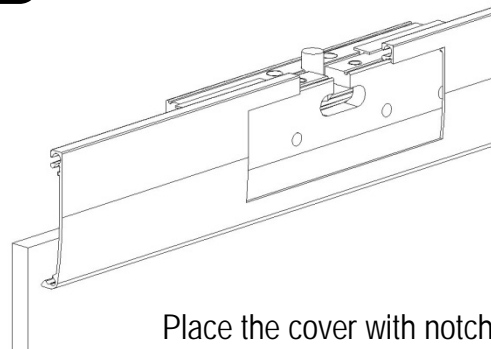
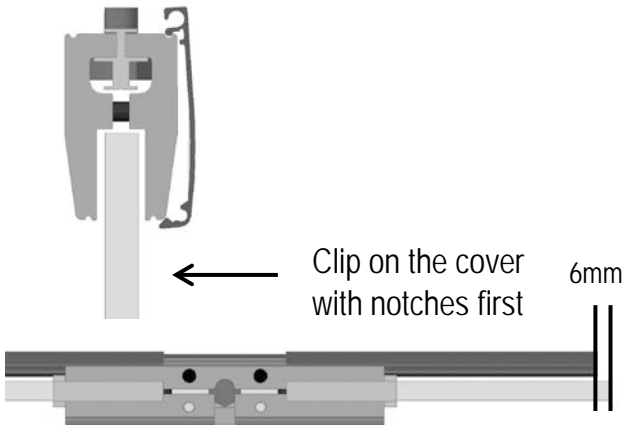


a1



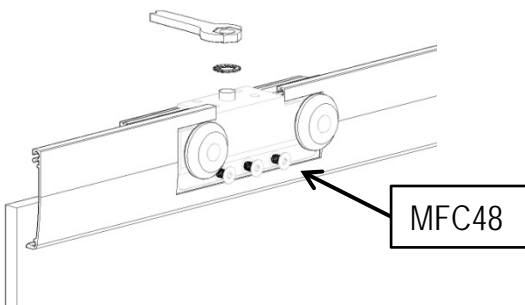
a2

b Clipping on the clamp covers



Place the cover with notches beside the roller bearings. The cover must be in the line of the clamps.

c Fitting the bearings



Place the bearings on the clamps, and tighten the bottom nut M8 with its spring washer on the centre screw.

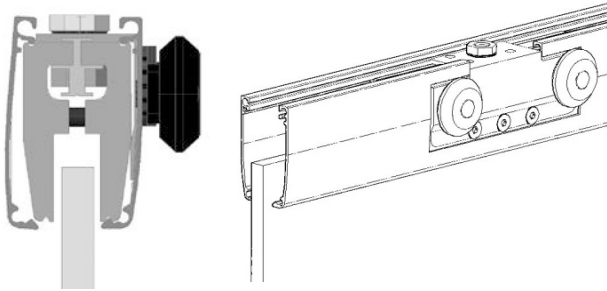
Also tighten the 3 screws MFC48 on the clamp.

DOUBLE DOOR - GLASS

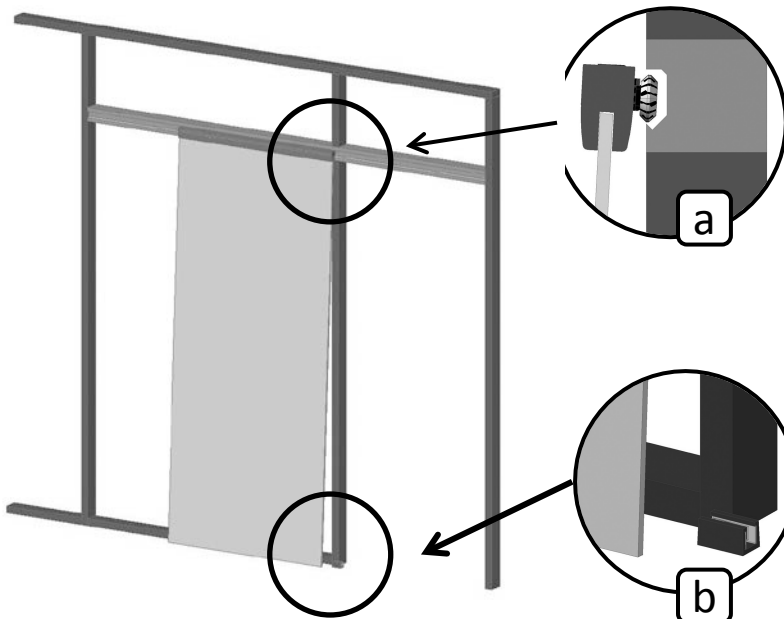
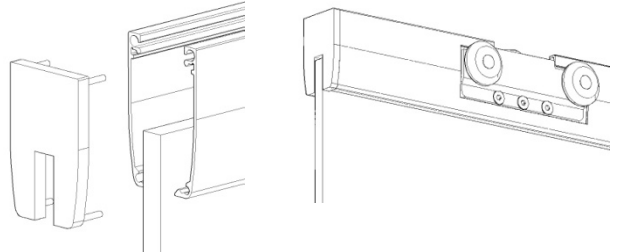
FITTING THE DOOR

2 FITTING ACCESSORIES (continued)

Clipping on the other cover

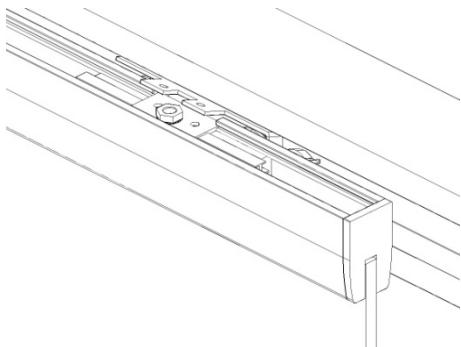


Fitting the end piece



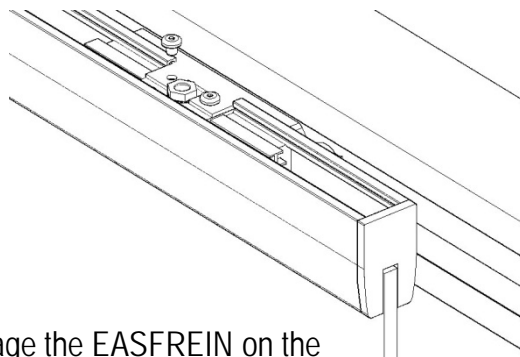
a Place the door just in front of the guide, on the floor, beside the cover module. Slightly tilt it to put the rollers in the rail.

b Push the door onto the partition and engage the door in the floor guide



c

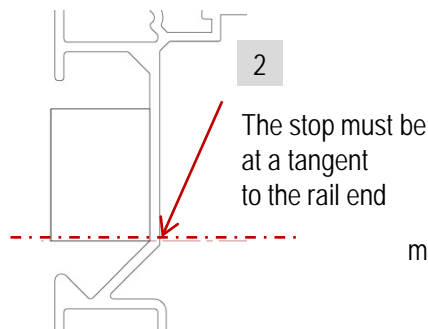
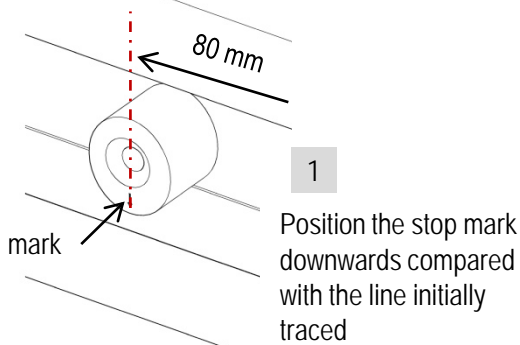
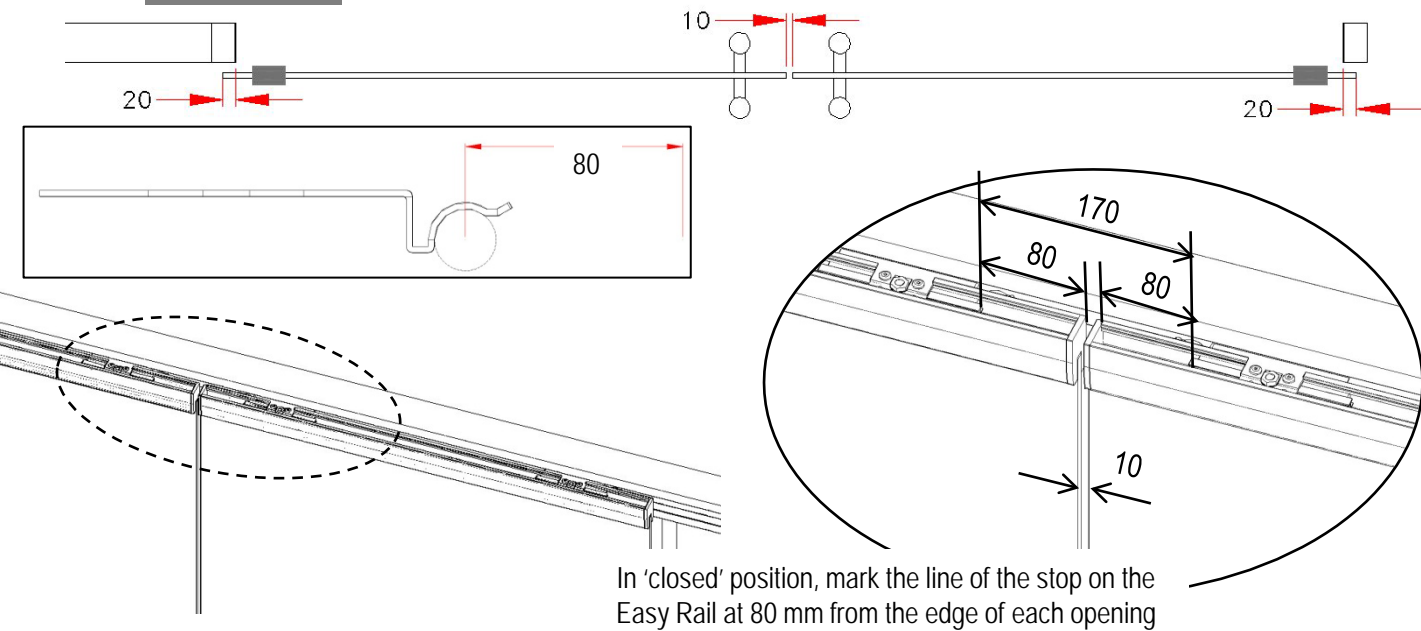
Engage the EASFREIN on the bearing and screw in the MTB56



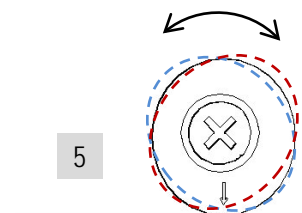
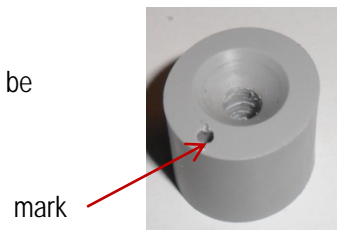
DOUBLE DOOR - GLASS FITTING THE DOOR

3 FIXING THE STOPS CL023

CAS 1 Door in 'closed' position



Stop CL023



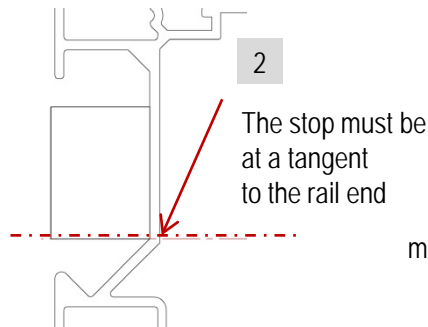
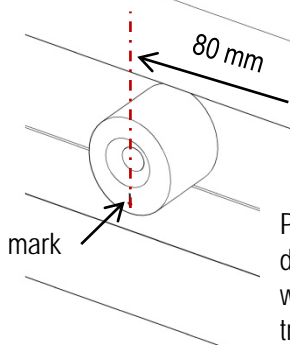
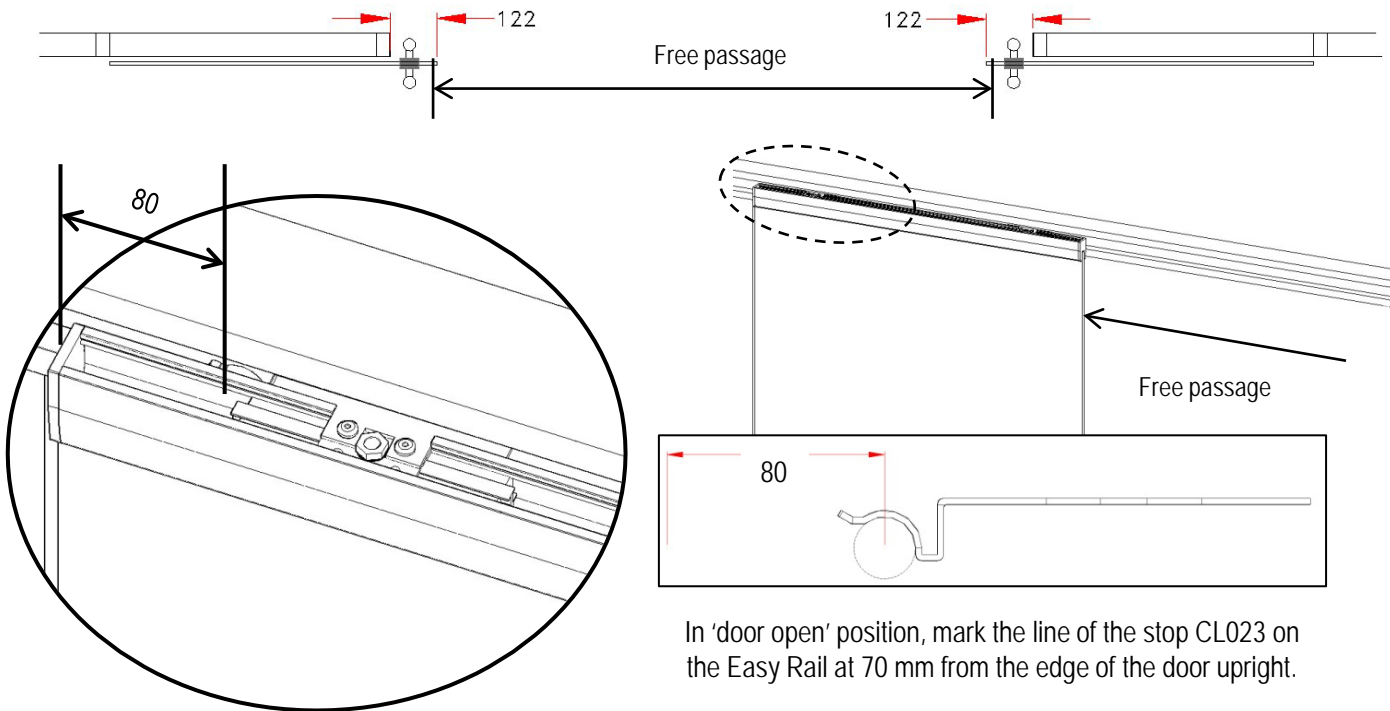
Adjust the stop

By turning the oval doorstop, it is possible to influence the brake on the door.

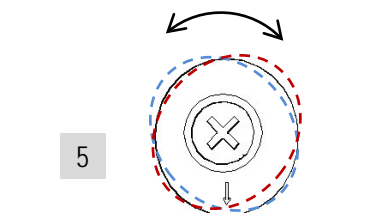
DOUBLE DOOR - GLASS FITTING THE DOOR

CAS 2

Door in OPEN position



Stop CL023



By turning the oval doorstop, it is possible to influence the brake on the door.



HOYEZ SAS
71 rue of Lille
F. 59710 Avelin
T. +33 (0)3 28 55 11 55

hoyez@hoyez.com
www.hoyez.com

