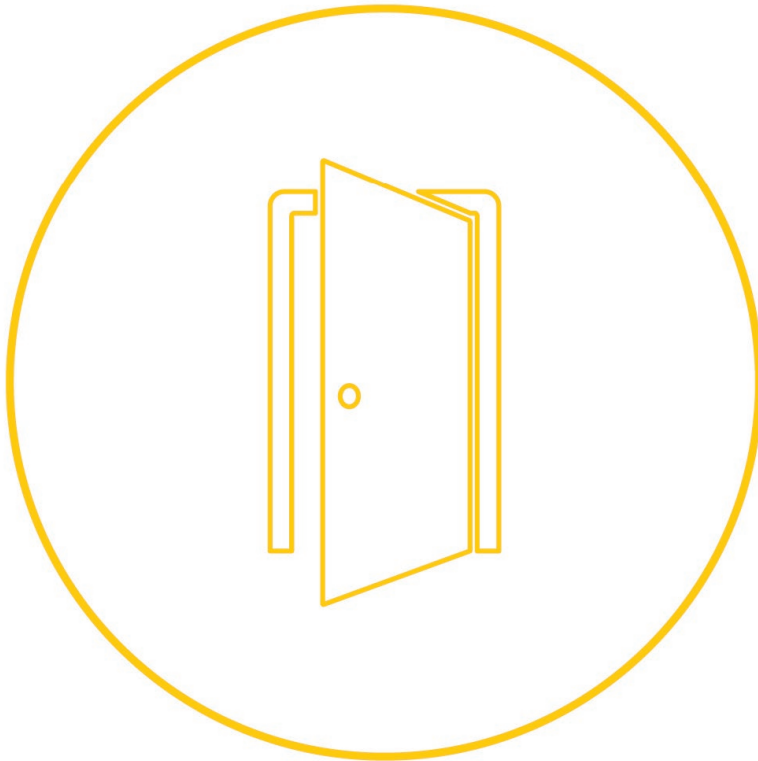


Bâti H

ALUMINIUM DOOR FRAME



Assembly notice

Notice to be respected for an assembly in
conformity with our products

01/2021

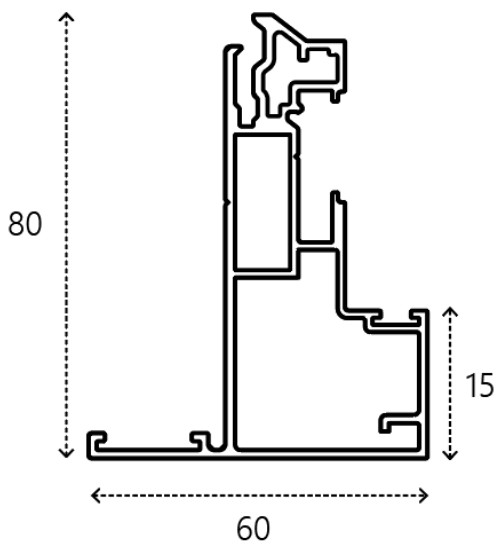


Saw with adjustable stop
Laser meter + Meter
Screwdriver
Allen key no.4
Drill $\varnothing 10 + 5$ mm

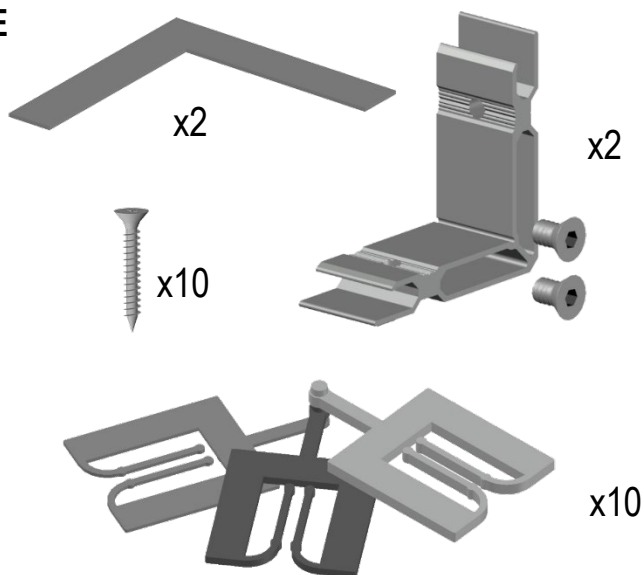
Screws adapted according
to fixing support
Drilling template (for
profiles in lengths)

Profiles and Accessories

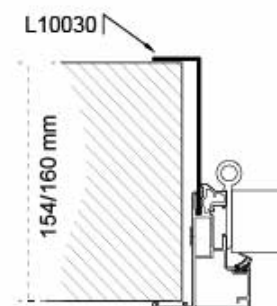
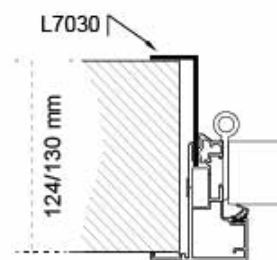
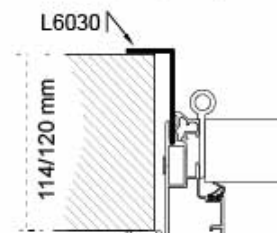
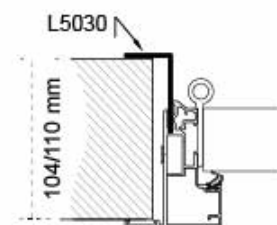
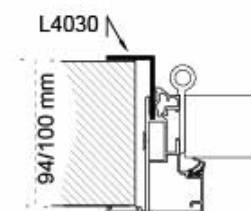
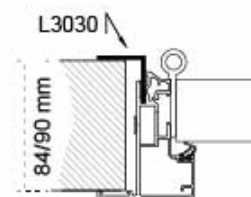
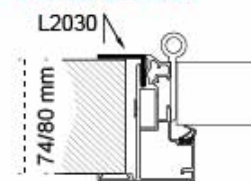
HBDW80



KITDW2E



Cornière
Corner bracket



For profiles delivered
in length or without
cutting or machining.

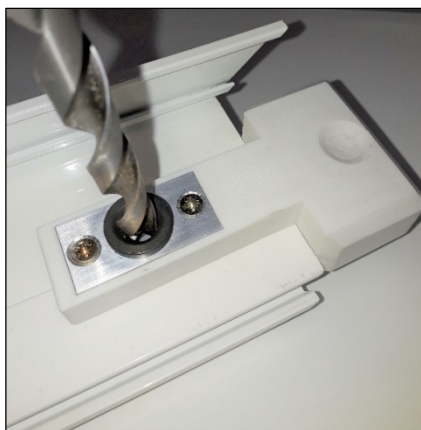
1. DRILLING THE HOLE FOR ASSEMBLY BRACKET



DRILLING TEMPLATE



Positioning of the
drilling template on
the cut profile at 45°



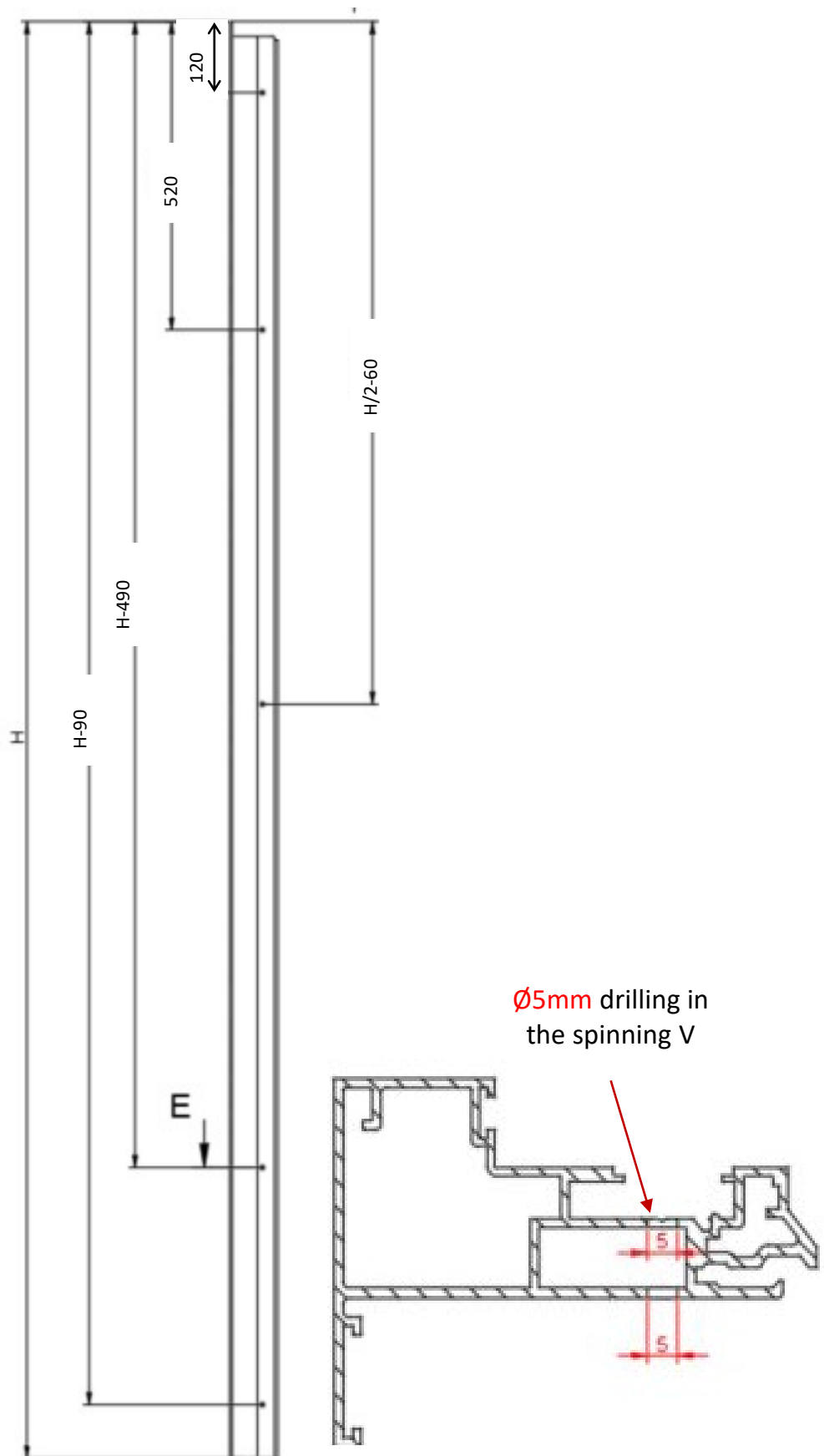
Ø10mm drilling on
each profile



Drilling
result

For profiles delivered in length or without cutting or machining.

2. DRILLING THE FIXING HOLES ON THE DOOR FRAME UPRIGHTS



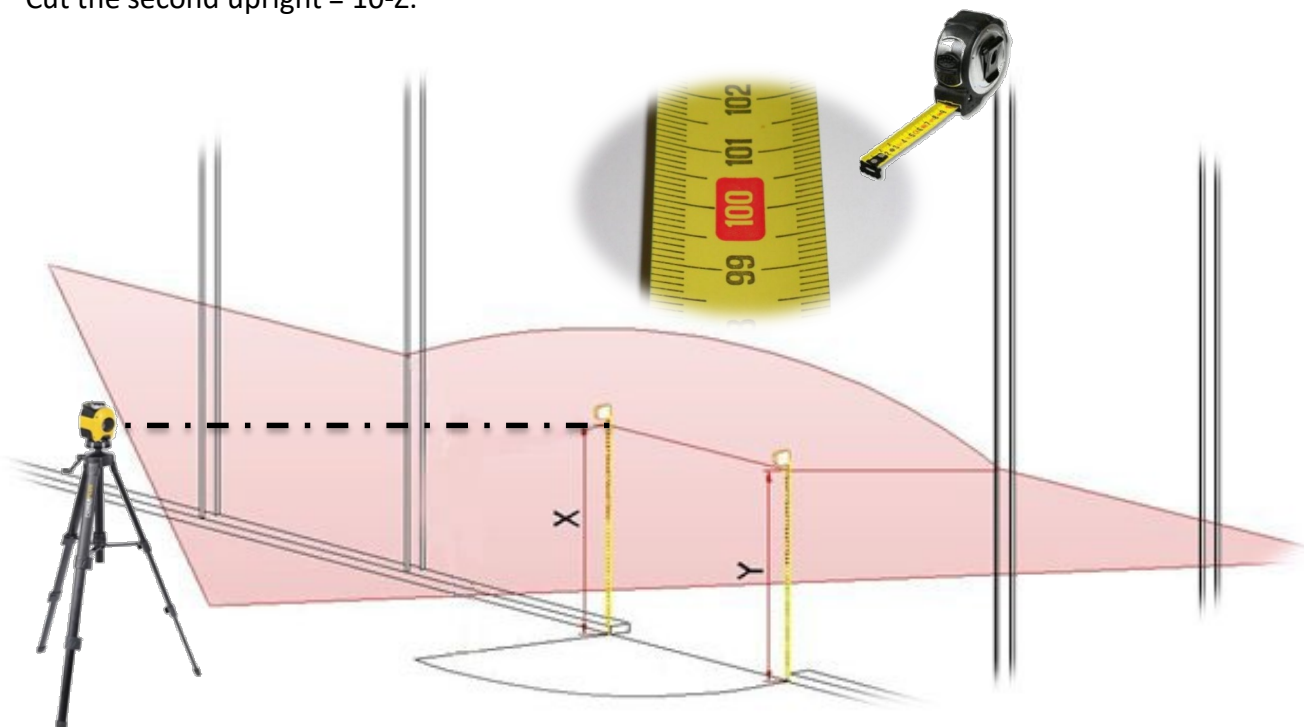
Frame assembly



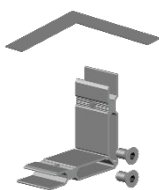
POSITIONNING THE FRAMEWORK COMPARED TO THE GROUND.

The framework is delivered with an extra length of **10mm** in the height. This framework must be cut in the bottom.

1. Check the ground level from the door.
2. Take the highest point between the right and left upright of the framework.
Cut this upright of 10mm.
3. Take the height difference between the right-hand side and the left-hand side : $Z = (X-Y) > 0$ ou $(Y-X) > 0$.
Cut the second upright = $10-Z$.

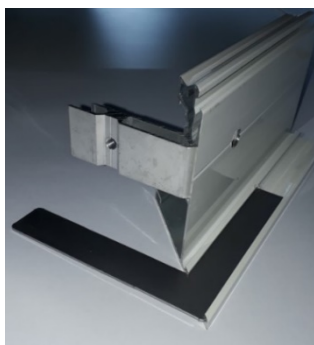


KITDW2E

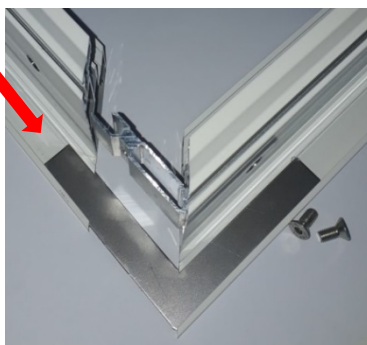


x2

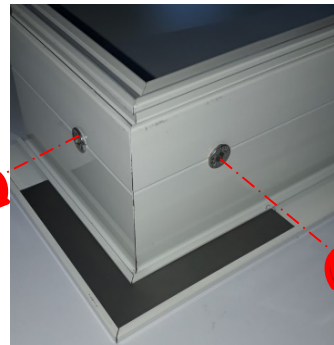
RECOMMENDED GROUND ASSEMBLY



Slide the 2 brackets on one end of the profile



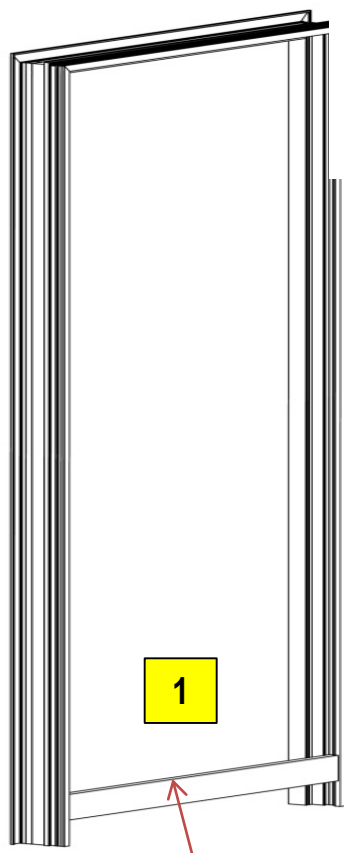
Engage the following profile on the brackets



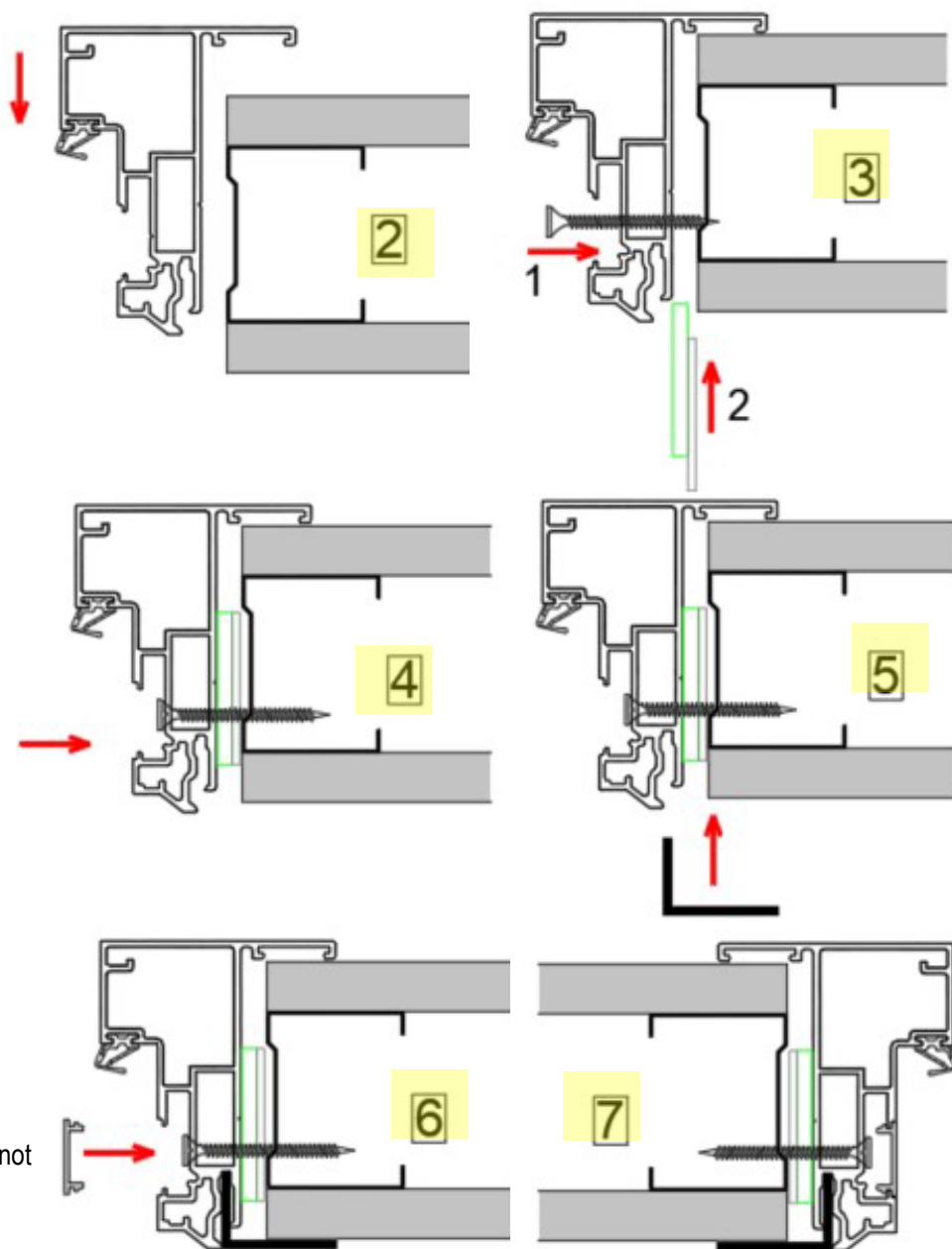
Tighten the screws together to complete the junction 45 °

Frame assembly

Fork shims
1, 2, 3 mm thick



Insert a maintaining wedge (not provided) for the framework squaring



1. To keep the squaring of the framework, insert a wedge (not provided)
2. Engage the frame in the free bay. Adjust the levels.
3. Screw and then slide the fork shims at the location of the fixing screws, between the frame and the drywall, starting with the hinge or pivot side
4. Tighten securely on the wedges
5. Engage the finishing angle at the periphery
6. Fit the cover (PB19 / CP20) after fixing the rotation system and stainless steel strike.
7. Identical operation on the other 3 sides.